

**20205**  
**20205B**  
**07-12 GMC**  
**SIERRA**



**20205**  
**20205B**  
**07-12 GMC**  
**SIERRA**

**2007-2012 GMC SIERRA 1500**  
**BILLET INSERT OR OVERLAY**

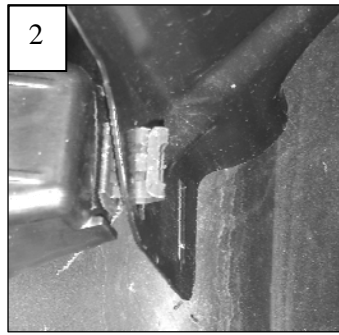
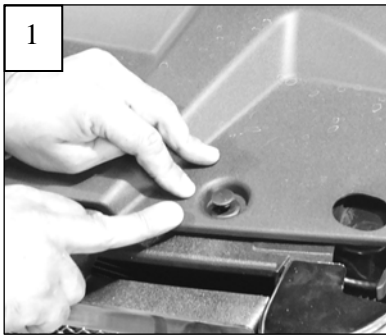
**Recommended Tools:**

Phillips / Slotted Screwdrivers  
10mm Socket & Ratchet  
5/16" Wrench  
Drill & 1/8" Bit (Optional)  
Die Grinder or Jig-Saw (Optional)

**Parts List / Hardware:**

1	Billet Insert	6	1.5" J Hooks
6	6-32 x 1.5" Machine Screws	6	#8 x 3/4 Phillips Screws
6	#6 Flat Washers	6	#8 Flat nuts
6	6-32 Nylon Lock Nuts		

**Read and understand instructions before attempting installation**



**Step 1**

Test fit the grilles into the opening. Remove plastic rivets securing the radiator cover; on top of the grille (1). Now remove the four 10mm bolts along the top of the grille. The grille has six metal clips that clip into the core support (2); two behind the GMC logo and four along the bottom. Pull the grille forward; use a slotted screwdriver to release the clips and remove the grille.

**Note:** For overlay (no cut style) installation, proceed to Step 5.

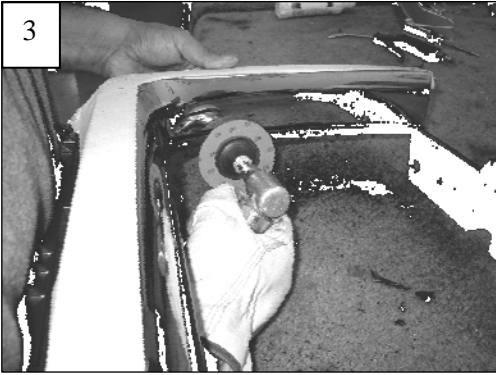


**Step 2**

This step installs the grille as an insert (cut bars from factory grille) style. Apply masking tape to the chrome or painted perimeter of the grille. The plastic bar along the top that bolts to the core support must be retained to install the grille. Do not cut this bar from the factory grille. Cut the four vertical bars 1/2" below the upper cross bar. Now cut the center cross bars from the grille; make three cuts on each end. Make your last four cuts along the bottom. The center bars securing the GMC logo will now separate from the grille (3).

**Step 3**

Use a die grinder or file to smooth any rough edges around the opening. Test fit the grille in place; smooth any remaining rough edges (4).



#### **Step 4**

Center the grille into the opening. Use a marker to locate the mounting hole to the grille. Drill a 1/8" hole at each mark. Use the #8 screws and flat nuts to secure the grille in place (4). Skip to Step 6.

#### **Step 5**

This step installs the grille as an overlay (no cut) style. Use a slotted screwdriver to remove the GMC logo from the grille. Center the billet over the factory grille. Insert a screw into each hole on the insert. Slide a J hook onto the upper screw and start to thread one of the nuts. Repeat this process on the other side and then along the bottom. Use a screwdriver and 5/16" wrench to tighten hardware. Snug the hardware up evenly around the grille.



#### **Step 6**

Re-install the grille and radiator cover onto the vehicle.

*Thank you for purchasing a T-Rex Billet Grille. 3/1/07*

