

51474
54474

05-10 DODGE
CHARGER (ALL)



51474
54474

05-10 DODGE
CHARGER (ALL)

UPPER CLASS SERIES MESH GRILLE

Tools Required:

Slotted Screwdriver
Phillips Screwdriver
Small Hammer and 1/16" Punch
7MM & 10MM Sockets
Flat Black Paint (Optional)

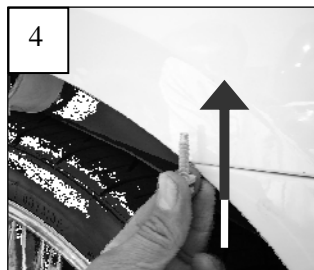
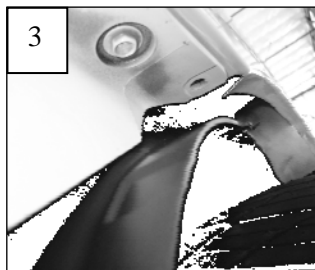
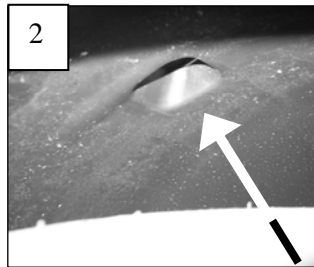
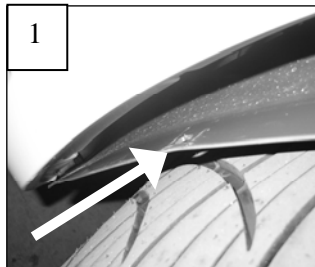
Hardware:

1 Mesh Insert, (Upper Class Series)
8 #10 Flat Washers
8 6-32 Flange Nuts
6 Plastic Body Retainers

Read and understand instructions before attempting installation

Step 1

Open the hood. Use a screwdriver to remove the eight push in fasteners along the top of the bumper cover. Next, remove the two-piece plastic cover assembly behind the four fasteners. Each cover has metal press-in clips securing them in place. Pull up on the covers to remove them. Remove the ten 7mm bolts that hold the engine splash shield to the bumper cover along the bottom.



Step 2

Remove the three plastic rivets securing the bumper cover to splash shields just below the fender line in each wheel well; 6 total (1). Use a small hammer and punch to remove the center from each plastic rivet. These rivets will be replaced with new hardware.

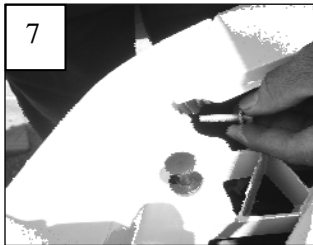
Now remove the single remaining plastic fastener in each wheel well. This is a re-usable fastener located in a recessed hole (2).

Each end of the bumper cover is secured to the fenders with a 10mm bolt. Pull the wheel well splash shields back and remove the vertical bolt in each corner (3 & 4).

(Continued)

Step 3

Behind each signal light is a 10mm nut attached to a stud (5). Access this nut from the wheel well with an extension and socket. The last retaining bolt is in the top corner of each fender. This bolt is shown next to the outer push in fastener (6 & 7).



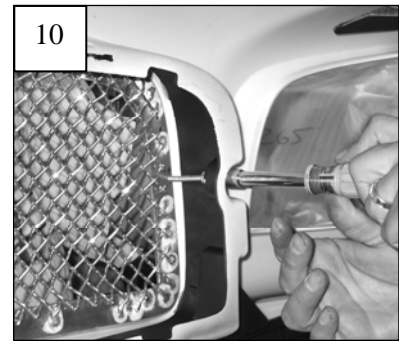
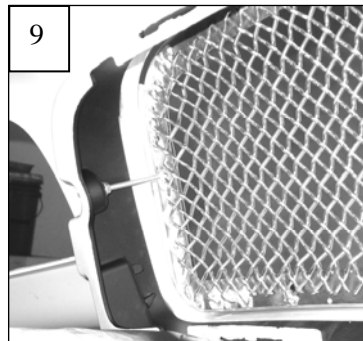
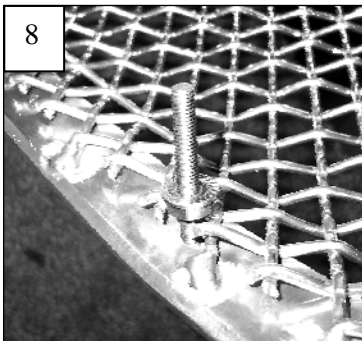
Once these are removed, gently pull the bumper cover forward until the signal lights pop out. Disconnect the signal light wiring. Continue removing the bumper cover and disconnect the wiring to the driving lights.

Remove the grille by removing the four Phillips screws holding it in place.

Lighter color vehicles (silver, cream, etc) will require a coat of black paint to the opening of the grille. Mask about 1-2" behind the opening. Lightly scuff the paint and apply a coat of black paint.

Step 4

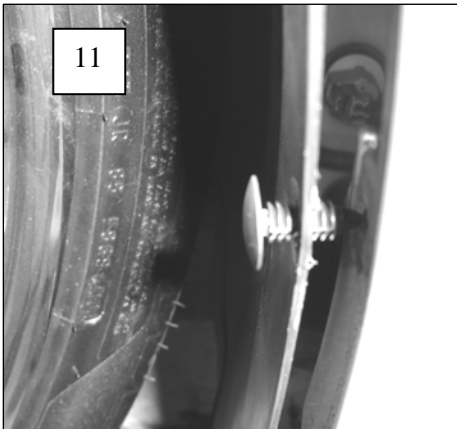
Thread the flange nuts onto the studs halfway onto the studs and a washer on each (8). These nuts will adjust the height. Center the grille into the opening; Insert the mounting studs into the mounting holes (9). Install the #10 washers and flange nuts onto the studs; do not tighten the nuts down at this time (10).



(Continued)

Step 5

Now you can make any adjustment to the flange nuts. Check the alignment of the grille in comparison to the face of the bumper cover. It may be necessary to remove the grille and bend the face of the grille to have the proper contour. Be sure to protect the face of the grille with a towel or soft surface. Apply a small amount of pressure to the grille to correct the contour if needed. Once you have properly fitted and aligned the grille, snug the nylon lock nuts down. Make adjustments to the depth of the grille if needed. Use a wrench to snug the Nylon-lock-nuts tight. Do not over-tighten the hardware.



Step 6

Connect the wiring to driving lights. Re-install the assembled bumper cover assembly back onto the vehicle. The signal light wires must be in the bumper cover light holes. Carefully align the fenders to bumper cover studs. Gently push the bumper cover in place. Secure the assembly with the factory hardware. Replace the three rivets from each wheel well splash shield with the plastic push-in retainers supplied in the hardware pack (11). Re-install the signal lights. *Thank you for purchasing your T-Rex billet grille.* T-Rex Truck Products Inc. 5/24/06

