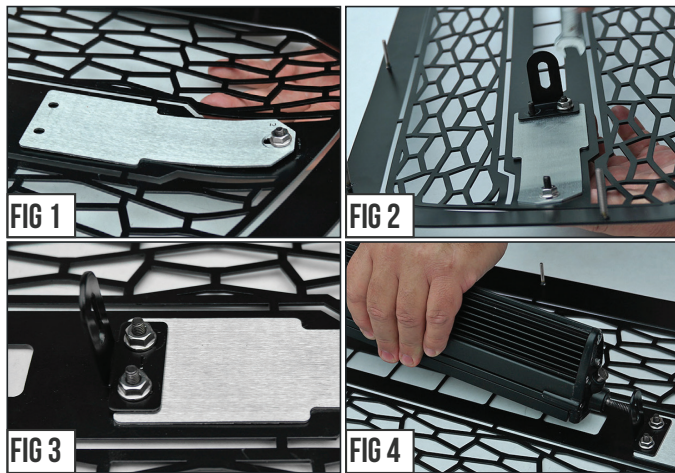


START HERE The ZROADZ Series Grilles comes into 2 different configurations. One style features the LED Light Bar mounting hidden on the backside, while the other style has exposed mounting provisions on the face side of the grille. Please note this and identify your ZROADZ Grille Series configuration and follow the instruction version that corresponds with your grille.

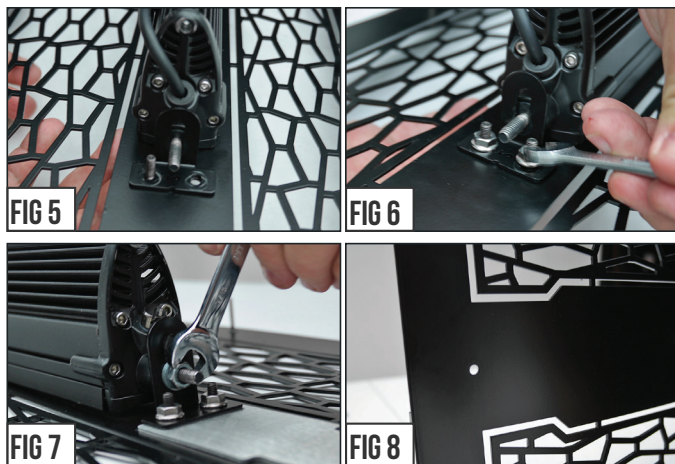
GRILLE CONFIGURATION STYLE 1



STEP 1 Lay out your parts. From the backside of the grille, put into place the ZROADZ Logo Backing Plate.

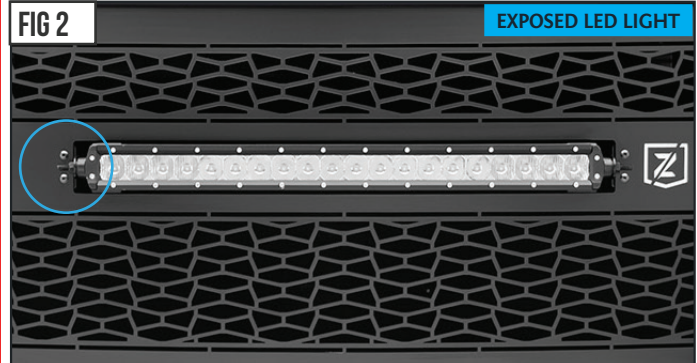


STEP 2 Put into place one of the Bracket Tabs and secure with provided Hardware as seen in Fig. # 2-4 and then from the backside of grille position LED Light Bar.

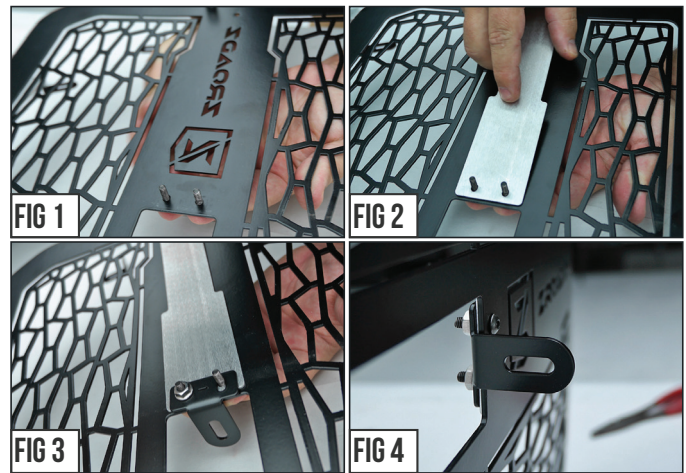


STEP 3 With LED Light placement set, put into position the remaining bracket and the finally tighten LED and all Mounting Brackets into their final secured position.

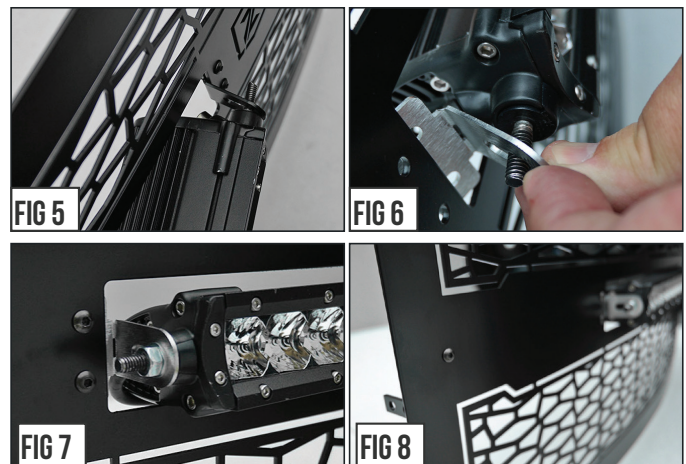
GRILLE CONFIGURATION STYLE 2



STEP 1 Lay out your parts. From the backside of the grille, put into place the ZROADZ Logo Backing Plate.



STEP 2 Put into place one of the Bracket Tabs and secure with provided Hardware as seen in Fig. # 1-4.



STEP 3 From the face side of grille slip the LED Light bar into place. On the opposite side, position the remaining bracket and finally tighten LED and Brackets into position.

STEP 4 There is a final step for both styles of ZROADZ Grilles. See both of the Figure #8 Images and note that there is an exposed hole. Use the Provided Hardware Button Head Screw and fill the hole and tightened down with Nut. This will create symmetrical look from side to side.

GRILLE ASSEMBLY - COMPLETE

T-REX

GRILLES



ZROADZ SERIES GRILLE

MAIN GRILLE - #Z315471

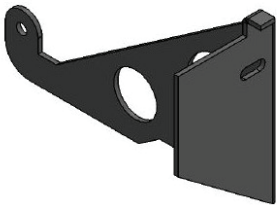
2017 F-250 / F-350 / SUPER DUTY

GRILLE REMOVAL & GRILLE INSTALLATION GUIDE

PARTS INCLUDED

(1) ZROADZ Grille Assembly
Main Part #Z315471

(1) Horn Relocation Bracket



HARDWARE INCLUDED

Installs using OEM Factory Grille Hardware

TOOLS REQUIRED

- Screwdriver set (Long Flat Head)
- Metric Socket Set
- Ratchet Tool
- 1/2" Plastic Spatula Prying Tool
- Pocket Knife

START HERE

PLEASE READ AND UNDERSTAND ALL INSTRUCTIONS BEFORE INSTALLATION. Auto makers offer varied models to each vehicle and occasionally manufacture more than one body style of the same model. To assure your part is correct; our tech department can be contacted at tech@trexbillet.com to verify fitment and assist with technical questions. All other inquires can be directed to info@trexbillet.com. In the event you do not have internet access please call 1-800-287-5900.

* APPLICATION MODELS VARY. WE RECOMMEND TO VERIFY FITMENT BEFORE BEGINNING INSTALLATION PROCESS.
* IMAGES FEATURED IN THE INSTRUCTION DOCUMENTS MAY NOT ALWAYS EXACTLY MATCH YOUR GRILL.

STEP 1 FRONT BUMPER REMOVAL

1) Turn off engine and chock tires with stop block. Open Hood.

PRO TIP:

Before you begin, use "3M Painters Tape" to apply a protective guard around the work areas. Attend to the fender and bumper valance. This will help protect the paint and finish of your vehicle.



FIG 1

STEP 2 SEE FIGURE 1 & 2

2) Identify & locate plastic push fasteners on top of shroud. Carefully pry off to remove fasteners and then set aside for reinstallation later.

STEP 3

3) Remove plastic shroud and then set aside for reinstallation later.



FIG 2

ZROADZ SERIES GRILLE

MAIN GRILLE - #Z315471

2017 F-250 / F-350 / SUPER DUTY

GRILLE REMOVAL - CONTINUED

STEP 4

SEE FIGURES 3 & 4

4) Unbolt the (8) screws that secure the factory grille along the top plate. Set aside Bolts for re-installation later.



FIG 4

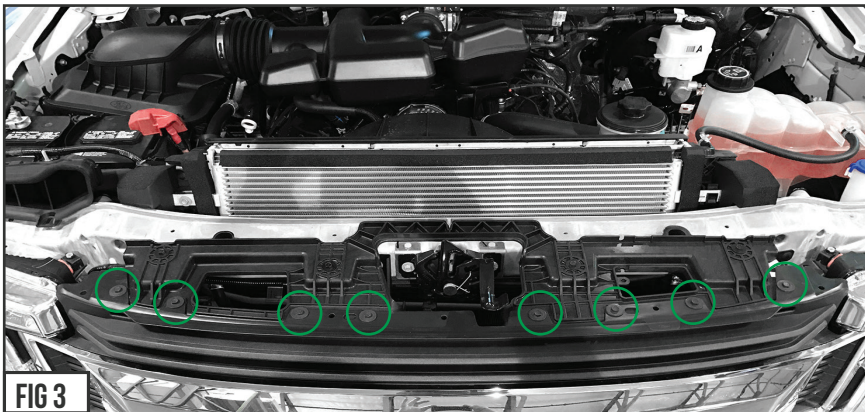


FIG 3



FIG 5

STEP 5

SEE FIGURES 5 & 6

5) Carefully pull back on the grille so you can access the (4) Retainer Clips that fasten along the bottom edge of the factory grille.

You will need to press down with a long pry tool on top edge of cup to release. (Figure #6)



FIG 6

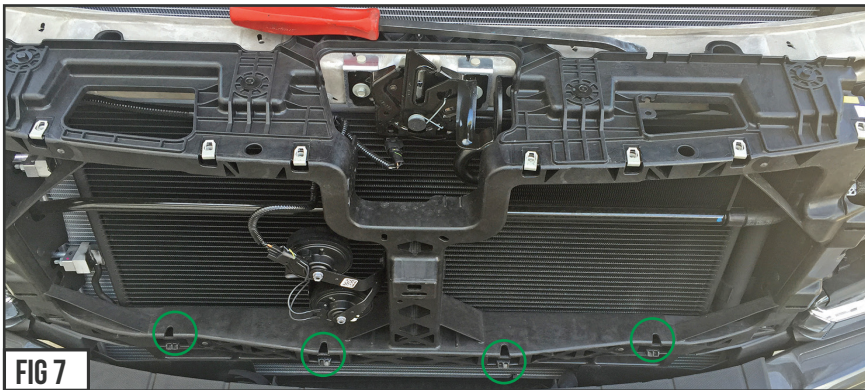


FIG 7

Note the location of the where the Factory Grille is fastened to the vehicle's core support.

SEE FIGURE 7

STEPS 6 - 8

- 6) The OEM Factory Grille should now be free and removed from the front of the vehicle.
- 7) Set factory grille aside and prepare to install your new T-REX Grille.
- 8) Remove the lower Retainer Clips from the OE Assembly and prepare to install the clips on the new T-REX Grille.

NOTE OF INTEREST

Your vehicle may feature a forward facing camera or adaptive cruise control.

This is an option on some models and will need to be disconnected before grille is removed.



FIG 8

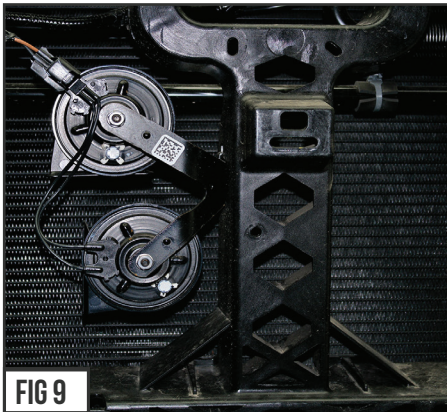
GRILLE REMOVAL PROCESS COMPLETE

ZROADZ SERIES GRILLE

MAIN GRILLE - #Z315471

2017 F-250 / F-350 / SUPER DUTY

HORN RELOCATION - START



STEP 9

SEE FIGURES 9 - 11

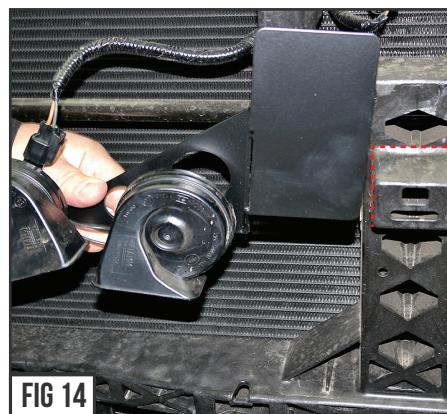
9) Unplug, unbolt and remove the factory horn from the horn bracket.



STEP 10

SEE FIGURES 12

10) With the Horns removed, unbolt the horn bracket from the vehicle's core support structure.



CUT FLUSH & REMOVE

STEP 11

11) Note the T-REX Horn Relocation Bracket orientation in Figure #14 and the protruding core support pad that is in the way of the new bracket. This will need to be cut down and removed.

We recommend using a 90 degree abrasive cutoff wheel, or a hack saw would also work just fine. Once that obstruction is cut down, it should be sanded down till flush.

STEP 10

SEE FIGURES 13 & 14

10) Take the supplied T-REX Horn Relocation Bracket and assemble the factory horns to new bracket as seen in Figures #13 & #14.



STEP 12

12) Now you can mount up and bolt into place the T-REX Horn Relocation Bracket using the OEM Hardware from the original bracket.

HORN RELATION PROCESS COMPLETE

ZROADZ SERIES GRILLE

MAIN GRILLE - #Z315471

2017 F-250 / F-350 / SUPER DUTY

GRILLE ASSEMBLY

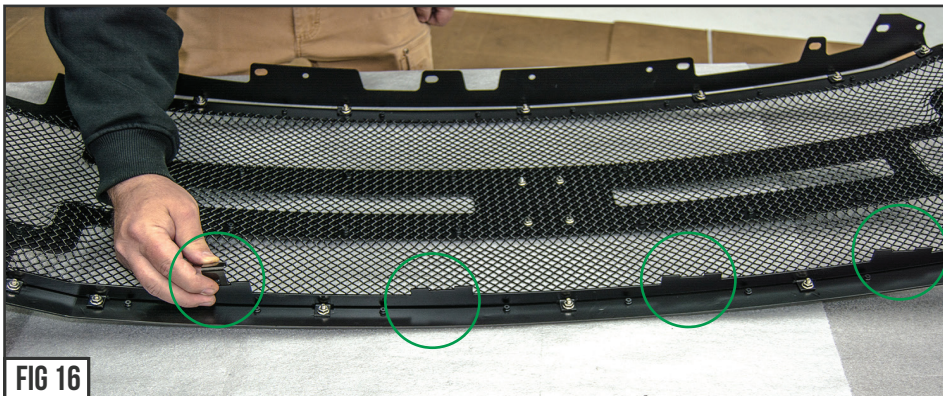


FIG 16

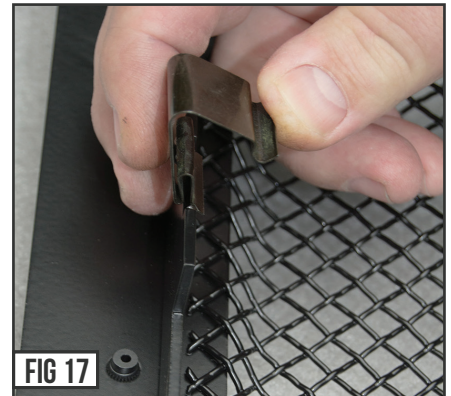


FIG 17

STEP 13

SEE FIGURE 16

13) With the new T-REX Grille Assembly placed face down on a flat cushioned surface. Note the T-REX Grille's Lower Mounting Plate with four pockets will locate and properly position the Retainer Clip Mounting Hardware.



STEP 14

SEE FIGURE 17

14) Press the Retainer Clips into position according to Figure #10 so the clip sits on grille mounting plate and the spring side points up towards the top.

Press firmly into position until it stops at the end of the clip.

GRILLE INSTALL - START



FIG 18



FIG 19



FIG 20

STEP 15

SEE FIGURE 18

15) The T-REX Grille is now ready to reinstall on vehicle. Match it up to factory mounting points and reinstall in the reverse order that the grille was removed. Start by aligning and pressing the (4) Retainer Mounting Clips back and up towards the vehicle so that latch band secure the grille in place.

STEP 16

SEE FIGURES 19 - 20

16) Push the grille up into place so that the Top Mounting Plate aligns into position and re-install the (8) factory bolts that were removed in Step #4.

Press grille back for hood clearance and adjust forward after checking hood alignment.

STEP 17

17) Place plastic radiator shroud cover over core support making sure the cold air intake lip is overlapped on top of the shroud. Align the factory mounting holes and use the plastic clips to secure and fasten in position.

INSPECT FOR ALIGNMENT

STEP 18

SEE FIGURE 21

18) Examine the gap alignments around all edges and in between the new T-REX Grille and the vehicle components and body lines. Carefully close the hood for a complete visual inspection. If adjustment is needed, you can loosen the top mounts and shift side to side for even gaps.



FIG 21

INSTALLATION COMPLETE



T-REX GRILLES PRODUCT WARRANTY

T-REX GRILLES PRODUCT WARRANTY

T-REX Truck Products warrants its grille products to be free from defects in material and workmanship for the lifetime of the grille. T-REX Truck Products warrants the finish of its grille products for a 3 year period beginning at the time of sale to the end user. These warranties are limited warranties and do not cover abuse, modification or improper installation nor do they cover finish failure caused by caustic cleaning agents, road salts or other chemicals. T-REX Truck Products reserves the right to repair or replace a defective product at its sole discretion. Any T-REX product must be returned to T-REX for warranty consideration and must be returned at the customer's expense. In the event that the product is deemed to be defective, the repaired or replaced item will be returned via a surface shipping method to the customer at T-REX Truck Products expense. No provision is made for any labor, rental car or other costs incurred by the failure of its products.

LED LIGHTING EQUIPMENT INSTALLATION / DISCLAIMER

WARNING

PLEASE CONSULT YOUR LOCAL AUTOMOTIVE ELECTRICAL PROFESSIONAL FOR INSTALLATION SERVICES AND ADVICE. T-REX IS ONLY EQUIPPED TO PROVIDE BASIC TECHNICAL ASSISTANCE DUE TO THE DIVERSITY OF VEHICLES, VEHICLE OPTIONS & MODIFICATIONS AND LIGHTING CONFIGURATION OPTIONS AVAILABLE. T-REX Truck Products cannot be held liable due to improper component installation and / or faulty wiring.

GENERAL GUIDELINES

LED Lights & LED Light Bars operate at relatively high currents and should only be installed by qualified personnel with experience in switched / relayed high draw DC Circuits.

- Light Bars are designed for use only with standard 12v DC power systems
- Light Bars are for OFF-ROAD USE ONLY. Check your local laws & regulations regarding vehicle mounted lights.
- Some Light Bars are equipped with waterproof connectors while others are simply pig-tailed
- Red Wires = POSITIVE | Black Wires = NEGATIVE
- ALWAYS install your lights on a fused circuit. Basic fusing guidelines: maximum 5A for every 10" of LED Light Bar.

GENERAL USE, INSTALL AND ADJUSTMENT TIPS

NOTE 1: T-REX Torch Series Grilles (with LED Light Bars installed), and LED Light Bars themselves are for OFF-ROAD USE ONLY.

NOTE 2: Light Bars in Torch Series Grilles are installed flush with the grille from the factory. This may or may not be the ideal angle for each light depending on the configuration of your vehicle and its options and/or modifications. To adjust the angle of your light bars simply loosen the mounting hardware on either side of each Light Bar, rotate the Light Bar to adjust the angle, then tighten the hardware once the desired angle is achieved (please be careful not to over-tighten the mounting hardware or scratch the protective powder-coat finish). It is best to adjust the angle with the vehicle on level ground with the lights facing a wall, garage door or other solid barrier at a distance of approximately 25-30 feet.

NOTE 3: Please consult a qualified automotive electrical professional for light bar wiring installation.

NOTE 4: An optional universal wiring harness (part# 639HAR1) is also available that includes high-heat & oil/fuel resistant wires, waterproof connector, 12v relay, 12v rocker switch, in-line fuse holder. Our universal wiring harness significantly expedites the installation process but is not a vehicles specific "Plug & Play" product and does not eliminate the need for a professional installation.

Please contact your local T-REX dealer for more information or visit www.trexbillet.com.

GRILLE CARE INFORMATION

GRILLE CARE INFORMATION

T-REX grilles are finest in the industry but do require normal care. Wash regularly as you would when caring for your vehicles. Never use dish soap.

POLISHED FINISH

T-REX polished grilles should be waxed at the same time that you wax the vehicle and can be cleaned with soap and water. A polished finish can be cared for in the same fashion that would care for your vehicles factory chrome. Never leave wet water spots as that may leave a blemish.

MATTE BLACK FINISH

Paint warranty applies to defects in material and / or workmanship, it does not cover the matte finish surface appearance.

To enjoy the matte appearance for many years to come, please follow these owner care and maintenance tips.

Get a no-shine matte car wash soap that uses no fillers, no silicone, and won't strip your matte paint of its layer of protection.

Do not use wax, detail spray, armorall®, or any products made for normal paint. Use only products specifically developed for matte finish paint. Do not use products that are even mildly abrasive, such as polishes, glazes, or rubbing compounds. Do not use mechanical cleaners or polishers. Do not use terrycloth, cloth, or paper towels. Do not rub the finish vigorously, this will burnish the paint finish, causing a permanent shiny spot. Shiny spots cannot be removed.

Do not use commercial car wash facilities or their shine enhancement products. Most car wash brushes, large mechanized "towels," and shine enhancement products can damage matte paint.

Remove foreign substances such as insect remains, tar, and road debris using a soft applicator and a mild solvent; saturate and soak area before cleaning—rub lightly.

Hand-wash with a soft wash mitt and mild cleaning product safe for matte paint. Use microfiber cleaning cloths with alcohol-based window cleaner for basic surface clean-up.

GLOSS BLACK FINISH

T-REX Grilles with Gloss Black Powder Coated Finish may be washed regularly as you would when caring for your vehicles finish using soap and water. T-REX grilles should be waxed at the same time that you wax the vehicle. As a general rule, anything you use to clean your vehicles painted surfaces can be used to clean and maintain your T-REX grille. A Gloss powder Coated Finish can be cared for in the same fashion that you would care for your vehicles factory paint job. Never leave wet water spots as that may leave a blemish.