

**55168**  
**08-12 CHEVY**  
**MALIBU**



**55168**  
**08-12 CHEVY**  
**MALIBU**

**1 PC MESH GRILLE**  
**2008-12 CHEVY MALIBU**

**Recommended Tools:**

Philips/Slotted Screwdriver  
8MM, 10MM Wrench or Nut Driver

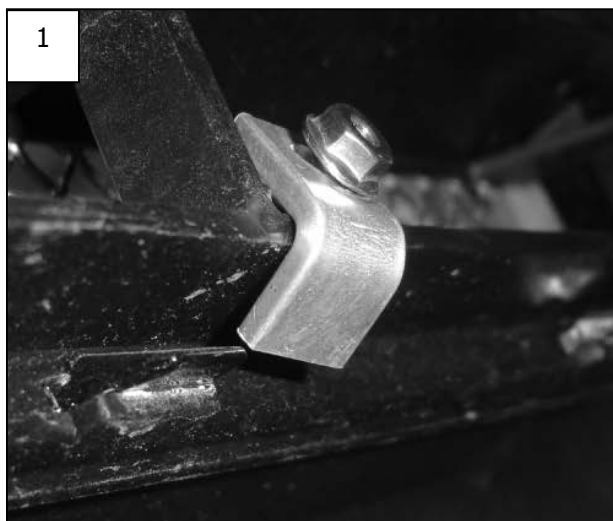
**Parts List / Hardware:**

1 Mesh Insert  
4 1/2" x 1/2" L Brackets  
4 6/32 Nylon Lock Nuts

**Read and understand instructions before attempting installation**

**Step 1**

Remove the plastic clips and 10mm bolts to remove the lower motor shroud to allow access to the back of the stock grill.



**Step 2**

Insert the lower grille insert. Make sure that the mesh is centered. Place an L bracket and nylon lock onto each stud (1). Making sure that the grille is centered; tighten the nylon lock nuts till snug.

**Step 3**

Re-install the lower motor shroud to the vehicle using the factory hardware.

***Thank you for purchasing your T-Rex billet grille.***  
**7/17/08**