

6711011

**03-05 CHEVY
SILVERADO**



6711011

**03-05 CHEVY
SILVERADO**

1 PC UPPER CLASS SERIES GRILLE

Recommended Tools:

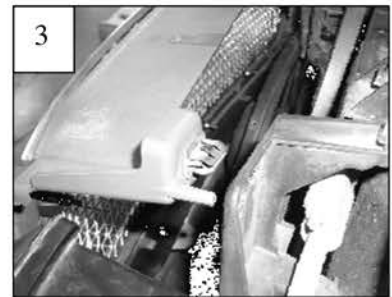
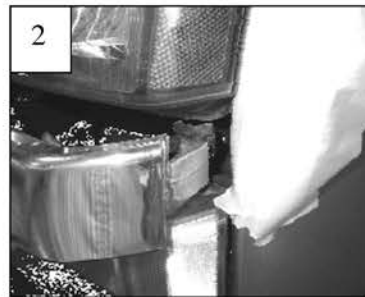
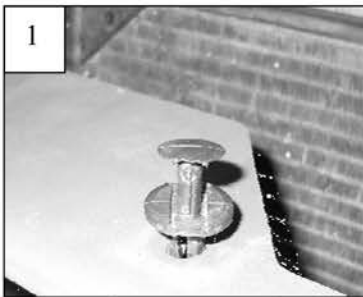
3/8 Wrench or Nut Driver
Slotted Screwdriver
Files / Sandpaper
Liquid Thread Lock
Masking Tape

Parts List / Hardware:

1 Upper Class Insert Chrome
2 Billet End Caps (1 left & 1 right)
2 10-32 Nylon Lock Nuts
7 Flange / 90° Brackets
2 1/2" x 1 1/4" Extension Brackets
7 6/32 Nylon Lock Nuts

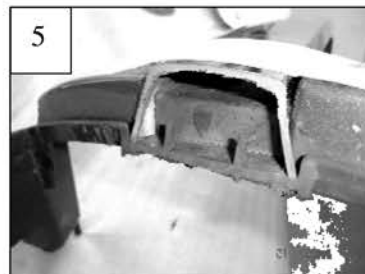
Read and understand instructions before attempting installation

Step 1



Apply masking tape to the chrome and painted areas to prevent scratching. Remove the plastic radiator cover fasteners (1). Release the headlight retaining rod to loosen the headlights. Pull the ends of the grille forward to release the metal clips (2). Now release the metal clips next to the headlights and signal lights (3). Remove the grille.

Step 2



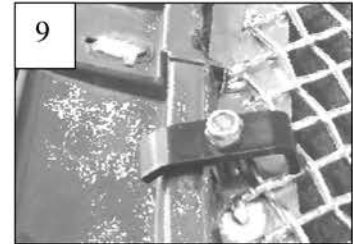
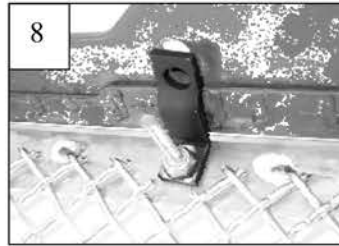
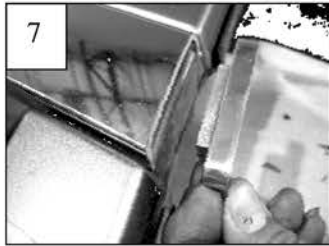
Place the grille face up on a work-table. Cut the center mesh along the top and bottom openings; make your cut at the base of the mesh (4). Continue the cuts down the grille across the chrome bar as shown (5). Make your cut in line with the grille opening; draw a guide-line using a marker. File or sand your cuts smooth (6).

(Continued)

Step 3

Thread the studs into the holes on the back of the billet. A small amount of liquid thread lock may be applied to the threads. **BE SURE NOT OVER-TIGHTEN THE STUDS** (Over-tightening can cause dimpling to the face of the billets).

Slide the billet end caps over the cuts on the chrome bar (7). These are a press fit; however if they are loose, a small amount of epoxy or contact glue may be applied to hold them in place. Center the billet into the opening of the grille shell. The extension brackets mount on top aligned with the holes on top of the grille (8). Install the 'L' shaped flange brackets onto the remaining mounting studs (9). The 90° bend rests outside the opening; against the plastic.



Thread a Nylon lock nut onto each stud. Tighten the nuts until the grille is held in place. **BE SURE NOT OVER-TIGHTEN THE STUDS** (Over-tightening can cause dimpling to the face of the billets). Re-install the grille assembly back onto the vehicle. Be sure the plastic fasteners grab the extension brackets on top of the radiator cover (1 & 9); it may be necessary to clean some of the powder-coat off the large hole with a screwdriver so the fastener will fit properly. Slowly close the hood to check the clearance between the hood and grille; adjust the grille if needed.

Thank you for purchasing your T-Rex billet grille. 6/29/06