

44055/46055

2015 Chevrolet
Tahoe/ Suburban



44055/46055

2015 Chevrolet
Tahoe/ Suburban

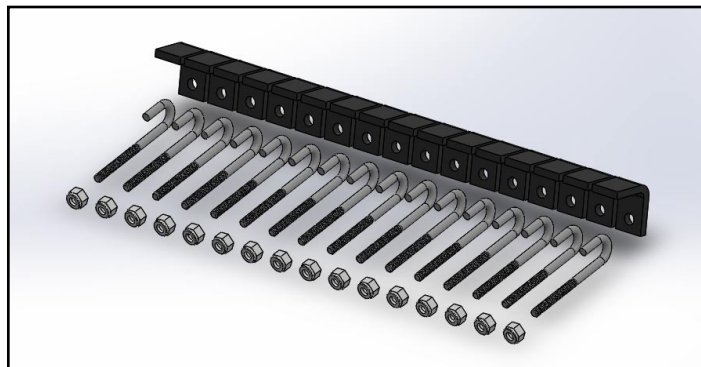
2015 Chevrolet Tahoe/ Suburban Sports Series Grille Overlay 2pc

TOOLS REQUIRED:

Flat Head Screwdriver
7mm Socket
10mm Socket
6/32 Socket
Ratchet & Extensions

PARTS LIST

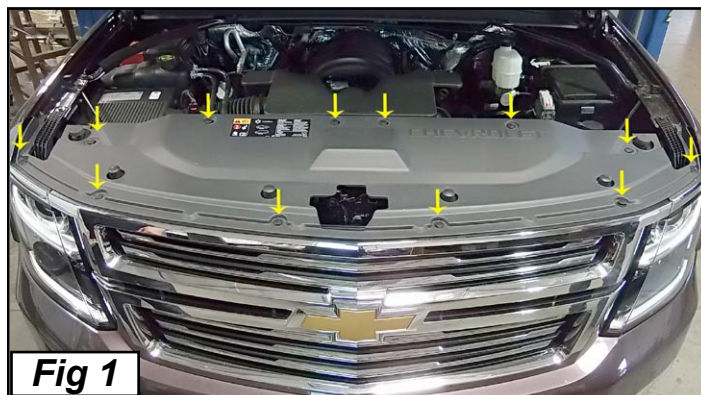
(16) 6/32 Nylock Nuts
(16) "L" Brackets
(16) 1-1/2 "J" Hooks



PLEASE READ AND UNDERSTAND ALL INSTRUCTIONS BEFORE INSTALLATION. Auto makers offer varied models to each vehicle and occasionally manufacture more than one body style of the same model. To assure your part is correct; our tech department can be contacted at tech@trexbillet.com to verify fitment or assist with tech questions. All other inquiries can be directed to info@trexbillet.com. In the event you do not have internet access please call 1-800-287-5900.

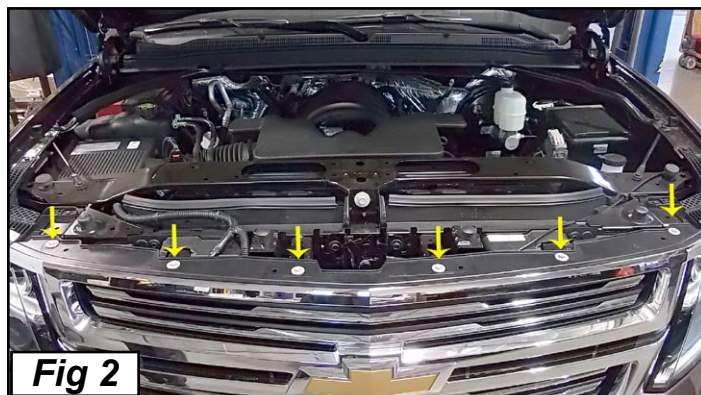
Step 1

Open hood and remove the 12 plastic push clips securing the plastic radiator shroud to the radiator core. Carefully use a flat head screwdriver to release the clip up, you can now remove the clips. Once all clips have been removed the plastic radiator shroud can be removed. (Fig 1)



Step 2

Using your 10mm socket and ratchet remove the six (6) 10mm bolts securing the upper grille assembly to the radiator support. (Fig 2)



44055/46055

2015 Chevrolet
Tahoe/ Suburban



44055/46055

2015 Chevrolet
Tahoe/ Suburban

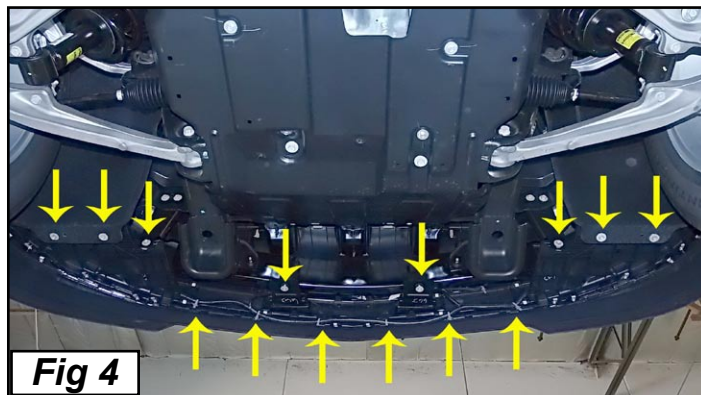
Step 3

Move to the sides of the front bumper and remove the six (6) 7mm bolts securing the lower bumper cover to the inner fender liner and fender. Turning the wheels will allow with additional room to remove the bolts. Repeat on opposite side of bumper. (Fig 3)



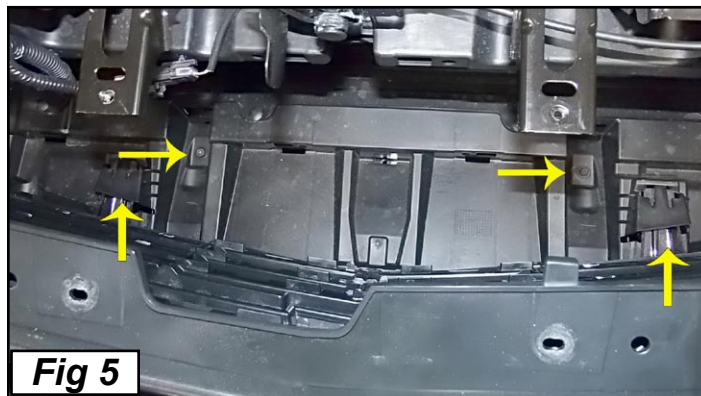
Step 4

Under the front bumper remove the eight (8) 10mm bolts securing the bottom of the bumper to the chassis. Two in the center and three (3) on each side. Finally detach the lower wiring harness clips securing the lower wiring harness to the bumper. (Fig 4)



Step 5

Return to the top of the grille assembly, gently pull back on the top of the assembly to access the rear of the grille assembly. Disconnect the fog light wiring harness, then remove the two (2) 10mm securing the bumper to the chassis. Finally with your flat head screwdriver to depress the two lower tabs securing the bumper to the chassis. (Fig 5)



Step 6

Firmly grasp the side of the bumper by the fender and carefully detach the end of the bumper from its retaining clip. Repeat on opposite side. (Fig 6)



44055/46055

2015 Chevrolet
Tahoe/ Suburban

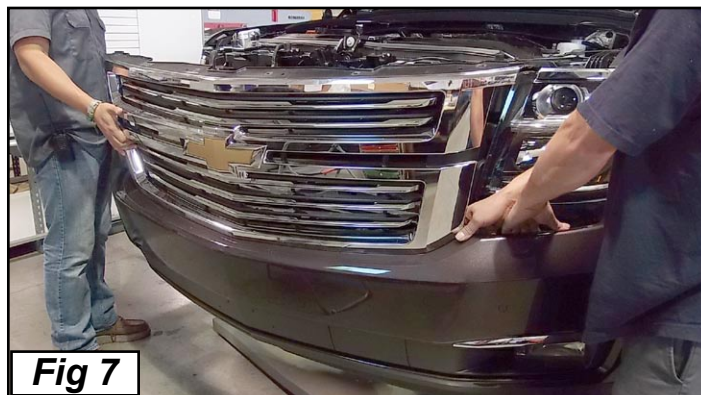


44055/46055

2015 Chevrolet
Tahoe/ Suburban

Step 7

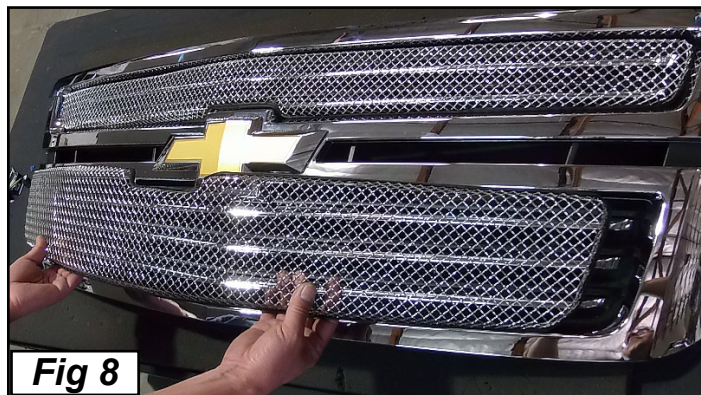
With the help of an assistant. The front bumper can now be removed by pulling the entire bumper/ grill assembly away from the front of the vehicle. Place Grille/ Bumper assembly on a soft surface. (Fig 7)



Step 8

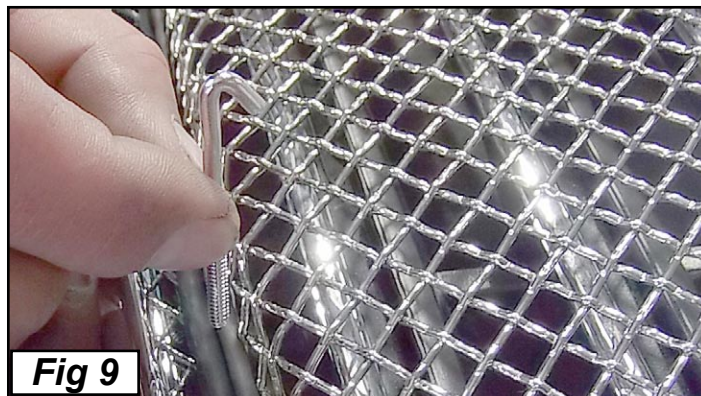
Position the T-Rex Sport Grille over the factory grille. Carefully press the ends of the grille into the factory grille assembly. The grille will fit tightly in the opening. (Fig 8)

(Note: If you wish to hide the exposed chrome from factory grille, we recommend you paint the factory chrome grille bars black prior to installing the grille)



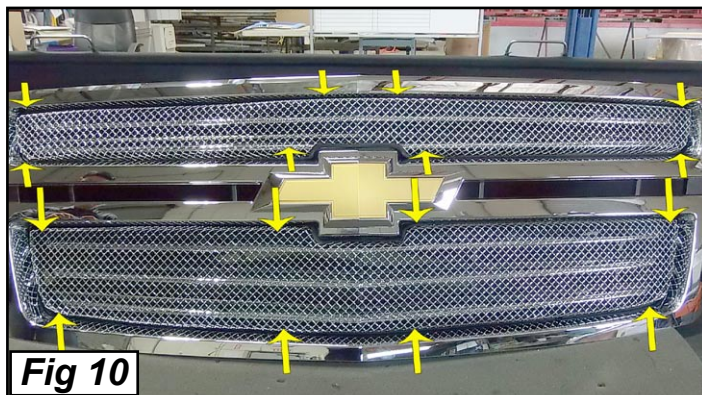
Step 9

The J Hooks will not be installed begin by installing the hooks threaded in down into the grille assembly as shown. (Fig 9)



Step 10

While securing the grilles in place stand the grille/ bumper assembly up. Slide the 16 J Hooks into the grille (8) on top / (8) bottom. You will then use the Nylock Nuts/ "L" brackets to secure the T-Rex Mesh grille to the factory grille. (Fig 10)



44055/46055

2015 Chevrolet
Tahoe/ Suburban



44055/46055

2015 Chevrolet
Tahoe/ Suburban

Step 11

Secure the (16) “J” hooks to the grille assembly by attaching the Flange Brackets to the back of the grille. Make sure the tabs face towards the factory grille as shown. Secure with the nylock nuts. (Fig 11)



Fig 11

Step 12

Your installation is now complete. Reattach the grille/ bumper assembly back to the vehicle in reverse order of removal. Make sure you reconnect all disconnected wiring harness and reattach all clips and screws. (Fig 12)



Fig 12