

55415

**09-10 DODGE
CHALLENGER**



55415

**09-10 DODGE
CHALLENGER**

09-10 DODGE CHALLENGER **Bumper Grille Upper Class Series**

TOOLS REQUIRED:

Flathead Screwdriver
10mm & 7mm Sockets
Ratchet

PARTS LIST

(2) 2" Flange Brackets
(2) 6/32" Nylon Locking Nuts
(1) Bumper Mesh Grille

Step 1

PLEASE READ AND UNDERSTAND ALL INSTRUCTIONS BEFORE ATTEMPTING INSTALLATION. Remove the plastic cover from under the front of the vehicle, this gives you access to the underside of the front bumper. There are (9) plastic pop clips, (2) 10mm bolts and (7) 7mm bolts. (Fig 1)

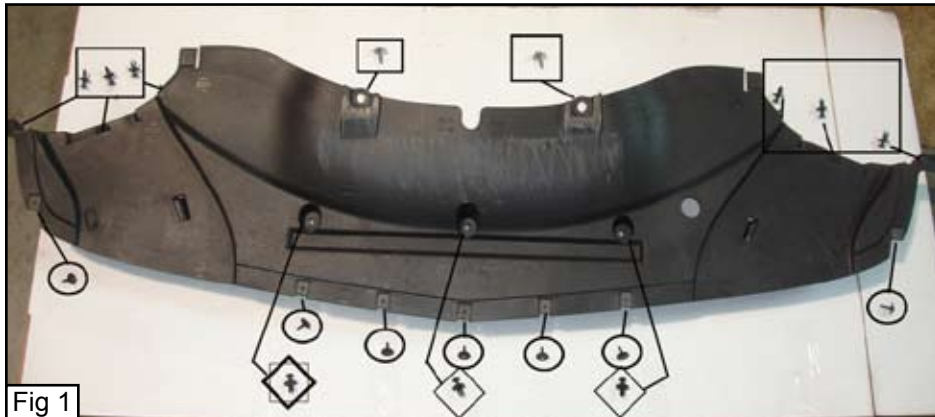


Fig 1

Step 2

Insert the upper class grille into the opening in the factory bumper. (Fig 2)

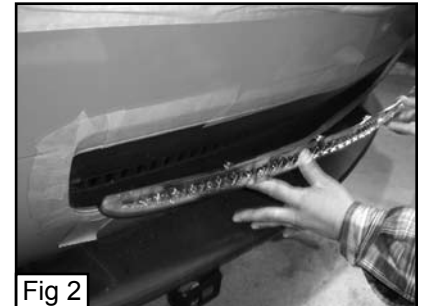


Fig 2

Step 3

While having someone hold the grille into the bumper opening, from behind the bumper cover put a 2" flange bracket on the threaded studs of the upper class grille with the bent ends facing the upper class grille. Install a 6/32" nylon lock nut on top of the flange bracket and tighten. Do this to 2 of the threaded studs on the upper class grille. (Fig 3)

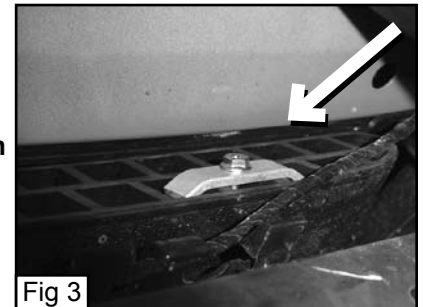


Fig 3

Step 4

Reinstall the bottom plastic cover on the vehicle. Installation complete.