

# 54442

## 11-12 DODGE CHARGER



# 54442

## 11-12 DODGE CHARGER

### 11-12 DODGE CHARGER

#### Upper Class Mesh Grille 4 Pc Look

##### TOOLS REQUIRED:

Flathead Screwdriver  
Plastic Prybar  
Socket & Ratchet Set

##### PARTS LIST:

(4) 10/32 Nylon Lock Nuts (1) Mesh Grille  
(4) Fender Flatwashers (4) Flange Brackets  
(4) 6/32 Nylon Lock Nuts

PLEASE READ AND UNDERSTAND ALL INSTRUCTIONS BEFORE ATTEMPTING INSTALLATION.

##### Step 1 Factory Grille Removal

Remove 2 Plastic Covers above the Factory Grille Shell. (Fig. 1)

Remove 4 Clips along the Factory Grille Shell. (Fig. 2)

Remove 2 Clips along the Fender. (Fig. 3)

Use a Plastic Prybar to separate the Fender Cover from Bumper Shell and remove (1) 10mm Bolt. (Fig. 4)

On each end, Clips secure the side bumper, Carefully pull the side bumper outward to release clips. (Fig. 5)

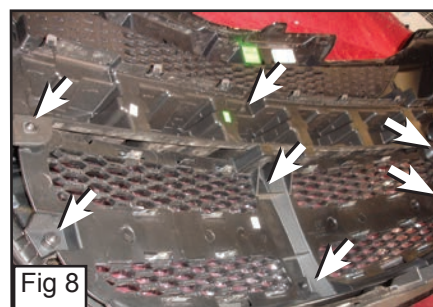
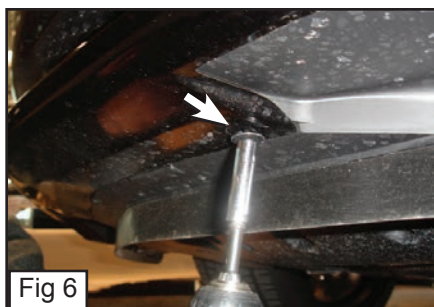
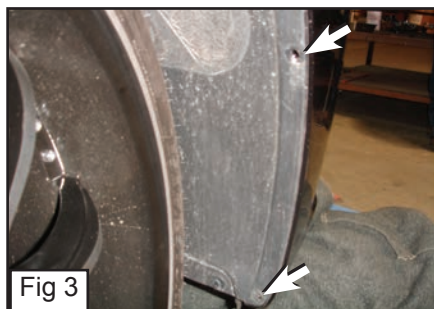
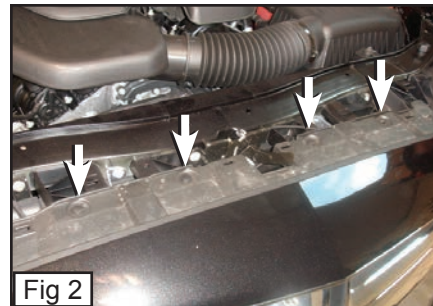
Remove 6 Bolts along the bottom of the Bumper Shell. (Fig. 6)

Remove factory grille and bumper (grille and bumper are connected together) (Fig. 7)

##### Step 2 Grille Removal

Remove 6 Screws from around the Factory Grille and 1 Screw on the Bumper Support. (Fig. 8)

Remove Bumper Support. (Fig. 9)



Continue on Page 2

# 54442

## 11-12 DODGE CHARGER



# 54442

## 11-12 DODGE CHARGER

### **11-12 DODGE CHARGER**

#### **Upper Class Mesh Grille 4 Pc Look**

Unclip 16 clips from around the Factory Grille. (Fig. 10)

Remove Factory Grille. (Fig. 11)

Unclip 8 Clips from around the OE Grille Shell and remove (OE Grille Shell will come out from front. (Fig. 12)

Unclip the Dodge Logo on the Factory Grille.

#### **Step 3 Grille Installation**

Place the Mesh Grille onto the Factory Shell. (Fig.13)

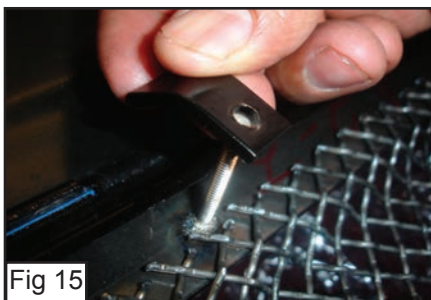
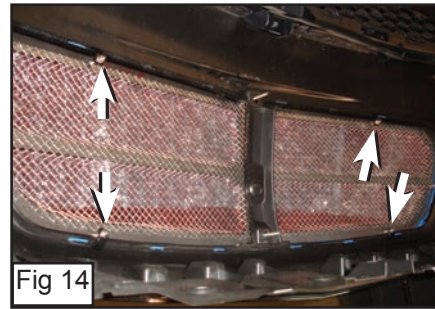
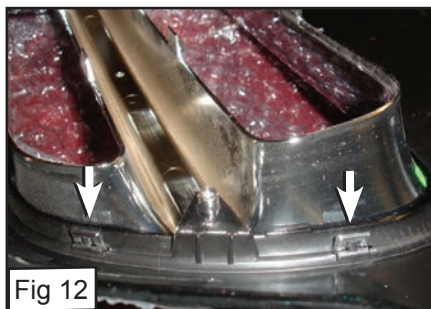
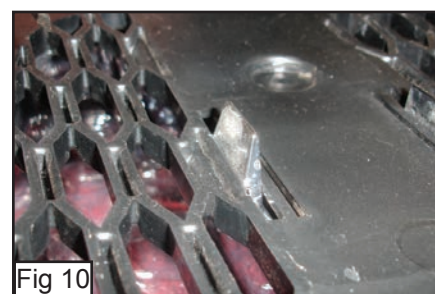
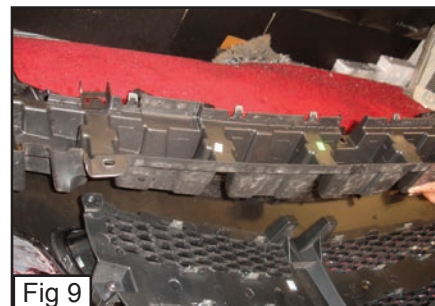
On the 4 Short Screws on the Mesh Grille, Insert Flange Brackets so it latches onto the Factory Grille Shell and thread a 6/32 Nylon Lock Nut in place. (Fig. 14 & 15)

Place back the Factory Grille over the Mesh Grille. (Fig. 16)

Place 4 Fender Flatwashers Around the Threaded Screws on the Mesh Grille and Thread 10/32 Nylon Lock Nuts in Place. (Fig. 17)

Place back the Bumper Filler and re-install the 3 Screws along the bottom of the Factory Grille.

Re-Assemble Grille Shell, Bolts and Clips back in.



#### **Installation Complete**