

30474

**05-07 DODGE
CHARGER (ALL)**



30474

**05-07 DODGE
CHARGER (ALL)**

1 PC FULL VERTICAL BILLET INSERT - POLISHED

Tools Required:

Slotted Screwdriver
Phillips Screwdriver
Drill & 1/8" Drill Bit
Small Hammer and 1/16" Punch
7MM & 10MM Sockets
Flat Black Paint

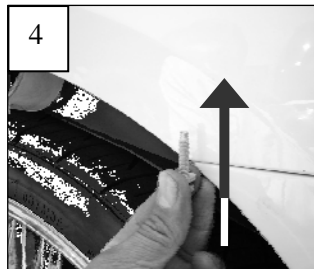
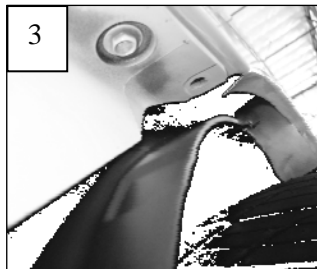
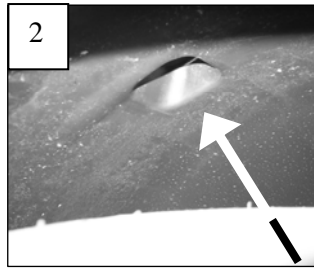
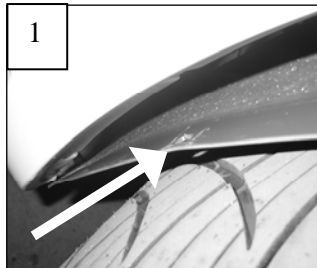
Hardware:

1 Vertical Billet Insert
6 #8 x 3/4 Phillips Screws
6 #8 Flat Nuts
6 Plastic Body Retainers

Read and understand instructions before attempting installation

Step 1

Open the hood. Use a screwdriver to remove the eight push in fasteners along the top of the bumper cover. Next, remove the two-piece plastic cover assembly behind the four fasteners. Each cover has metal press-in clips securing them in place. Pull up on the covers to remove them. Remove the ten 7mm bolts that hold the engine splash shield to the bumper cover along the bottom.



Step 2

Remove the three plastic rivets securing the bumper cover to splash shields just below the fender line in each wheel well; 6 total (1). Use a small hammer and punch to remove the center from each plastic rivet. These rivets will be replaced with new hardware.

Now remove the single remaining plastic fastener in each wheel well. This is a re-usable fastener located in a recessed hole (2).

Each end of the bumper cover is secured to the fenders with a 10mm bolt. Pull the wheel well splash shields back and remove the vertical bolt in each corner (3 & 4).

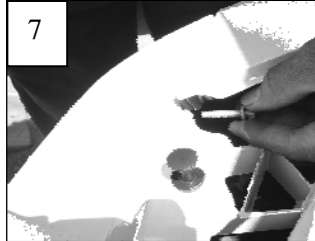
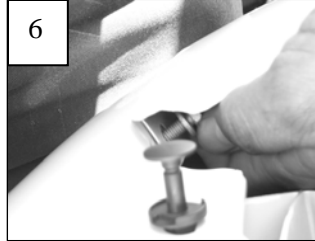
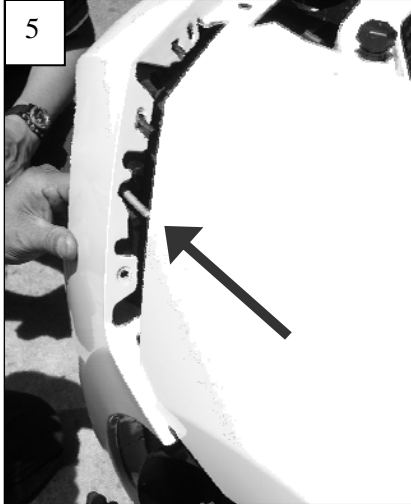
30474

30474

(Continued)

Step 3

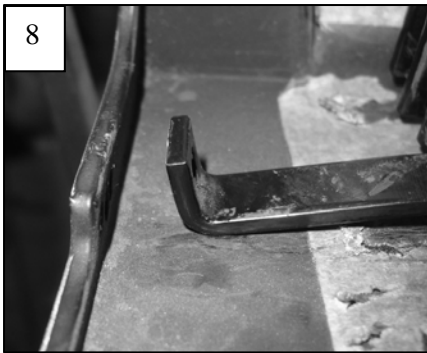
Behind each signal light is a 10mm nut attached to a stud (5). Access this nut from the wheel well with an extension and socket. The last retaining bolt is in the top corner of each fender. This bolt is shown next to the outer push in fastener (6 & 7).



Once these are removed, gently pull the bumper cover forward until the signal lights pop out. Disconnect the signal light wiring. Continue removing the bumper cover and disconnect the wiring to the driving lights.

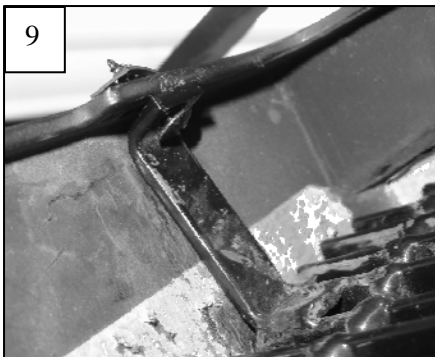
Remove the grille by removing the four Phillips screws holding it in place.

Lighter color vehicles (silver, cream, etc) will require a coat of black paint to the opening of the grille. Mask about 1-2" behind the opening. Lightly scuff the paint and apply a coat of black paint.



Step 4

Center the billet into the opening. Align the brackets to the lip in back of the bumper cover. It may be necessary to slightly bend the brackets so they align properly. Once the grille is centered, drill a 1/8" hole at each bracket. Use the #8 screws and flat nuts to secure the billet in place (8 & 9).



Step 5

Connect the driving lights. Re-install the assembled bumper cover assembly back onto the vehicle. Make sure the signal light wires are in the bumper cover light holes. Carefully align the fender to bumper cover studs. Gently push the bumper cover in place. The three rivets from each wheel well splash shield are to be replaced with the plastic push-in retainers supplied in the hardware pack. Re-install the signal lights. ***Thank you for purchasing your T-Rex billet grille.***

T-Rex Truck Products Inc. 03/21/08