

T-REX

Billet Grilles

25462

08 DODGE
MAGNUM

25462

08 DODGE
MAGNUM

BILLET GRILLE – 2 PC

Tools Required:

Slotted screwdriver
Wire Cutters
Tape

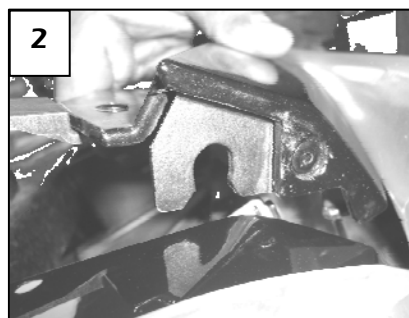
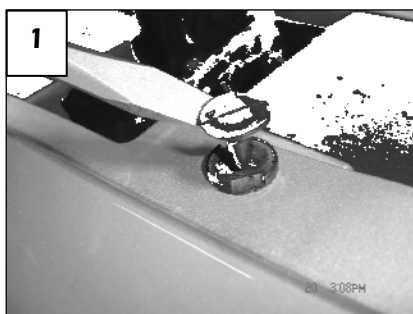
Hardware:

2 Billet Inserts (Upper and Lower)
4 ½" X ½" L Brackets
4 1 ¼" Phillips Screws
4 U Nuts

Read and understand instructions before attempting installation

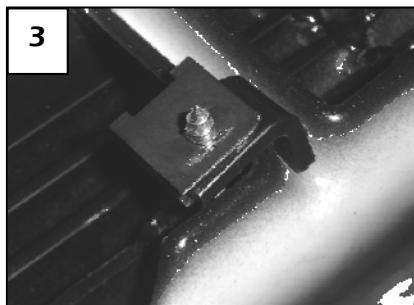
Step 1

Remove the two-piece plastic cover in front of the radiator support. Remove the clips holding the grille shell in place. Pull up to remove them (1). In each corner is a molded flap that secures the grille shell to the fenders. Pull up and separate the grille shell from the fender (2). This will allow access to the rear of the grille shell.



Step 2

Remove the factory grille inserts. Depress the clips to remove the inserts. Pull the inserts out of the grille opening. Install the U-Nuts onto the L Brackets. Install the lower grille in place. From behind the grille place the L bracket in place. From the front side of the grille; place a screw through the grille and into the bracket (3). Repeat this on the other side and tighten. Insert the upper grille; place the screw through the grille into the provided L bracket. Repeat on the other side. Tighten the screws evenly.



Step 3

Clip the grille shell back into the fender mounts. Replace all of the clips and reinstall the motor covers.

Thank you for purchasing a T-Rex Billet Grille. 2/20/08

