

25588
11-12 FORD
FIESTA



25588
11-12 FORD
FIESTA

11-12 FORD FIESTA

Bumper Billet Grille Insert - 1 Pc Center Opening

TOOLS REQUIRED:

Screwdriver

PARTS LIST

- (1) Billet Bumper
- (4) 2' Flange Offset
- (4) #8 U-Nuts
- (4) 2' Screws

Step 1

Place the #8 U-Nut to the 2' Flange Offset shown in Fig. 1



Step 2

Place the 2' Screws in the holes on the billet bumper and have the 2' Flange hooks facing towards the grille shown in Fig. 2



Fig. 1

Step 3

Place the billet grille over the factory bumper and turn the 2' Flanges sideways so they will go through shown in Fig. 3

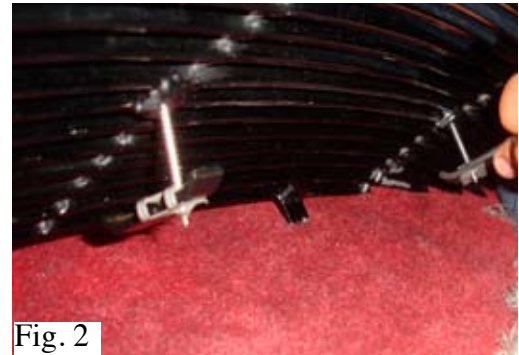


Fig. 2

Step 4

Once the 2' Flanges hook on the factory bumper. with another screwdriver or anything that will go through, tweak the Flanges and hold them in place then start to tighten the 2' Screws for all four shown in Fig. 4

Installation Complete



Fig. 4



Fig. 3