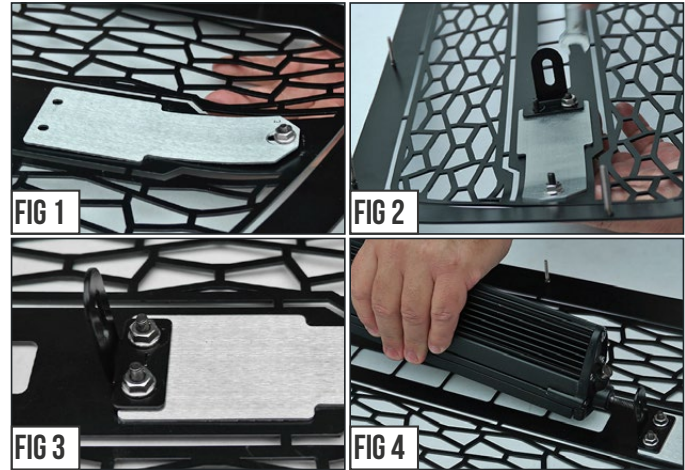


**START HERE** The ZROADZ Series Grilles comes into 2 different configurations. One style features the LED Light Bar mounting hidden on the backside, while the other style has exposed mounting provisions on the face side of the grille. Please note this and identify your ZROADZ Grille Series configuration and follow the instruction version that corresponds with your grille.

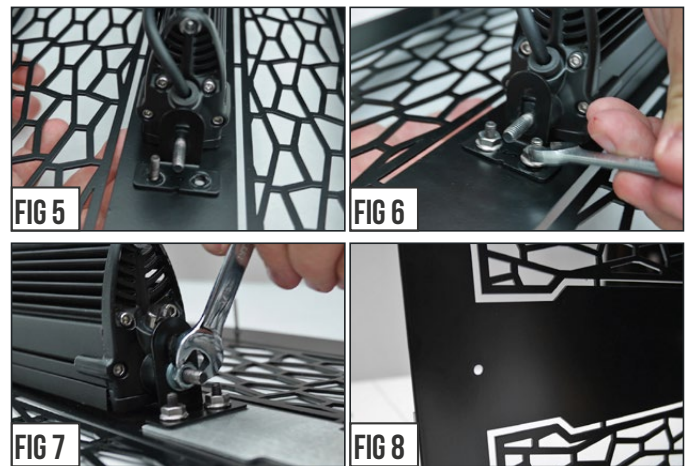
**GRILLE CONFIGURATION STYLE 1**



**STEP 1** Lay out your parts. From the backside of the grille, put into place the ZROADZ Logo Backing Plate.



**STEP 2** Put into place one of the Bracket Tabs and secure with provided Hardware as seen in Fig. # 2-4 and then from the backside of grille position LED Light Bar.

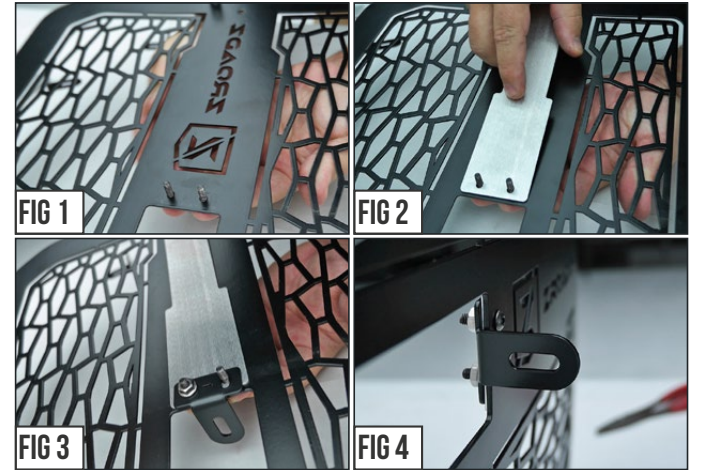


**STEP 3** With LED Light placement set, put into position the remaining bracket and the finally tighten LED and all Mounting Brackets into their final secured position.

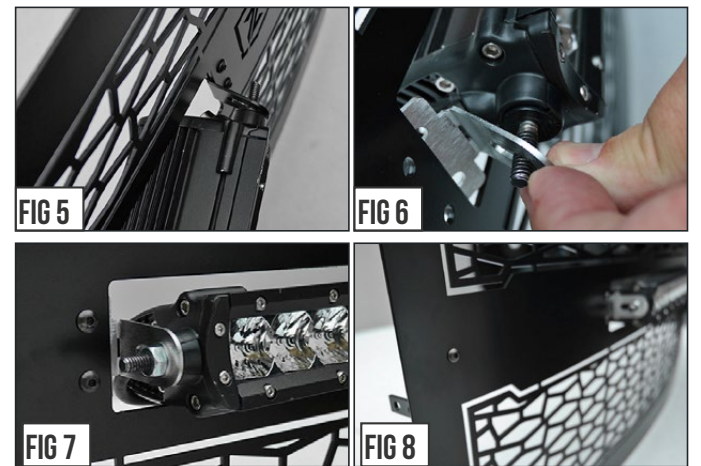
**GRILLE CONFIGURATION STYLE 2**



**STEP 1** Lay out your parts. From the backside of the grille, put into place the ZROADZ Logo Backing Plate.



**STEP 2** Put into place one of the Bracket Tabs and secure with provided Hardware as seen in Fig. # 1-4.



**STEP 3** From the face side of grille slip the LED Light bar into place. On the opposite side, position the remaining bracket and finally tighten LED and Brackets into position.

**STEP 4** There is a final step for both styles of ZROADZ Grilles. See both of the Figure #8 Images and note that there is an exposed hole. Use the Provided Hardware Button Head Screw and fill the hole and tightened down with Nut. This will create symmetrical look from side to side.

**GRILLE ASSEMBLY - COMPLETE**

# Z315461 11-13 FORD SUPER DUTY



# Z315461 11-13 FORD SUPER DUTY

## 11-13 FORD SUPER DUTY ZROADZ Grille - 1 Pc. - w/ optional logo plate For off-road use only

### TOOLS REQUIRED:

Socket & Ratchet Set  
Screwdriver set  
Jigsaw/Grinder/Cutting Wheel  
Masking Tape  
Vise Grips

### PARTS LIST

(11) #8 x 3/4" Screws (2) 1 1/4" x 3/4" Extension Brackets  
(6) #8 Flat Nuts (1) Mesh Grille  
(5) U-Nuts  
(2) 3/4" Spacers



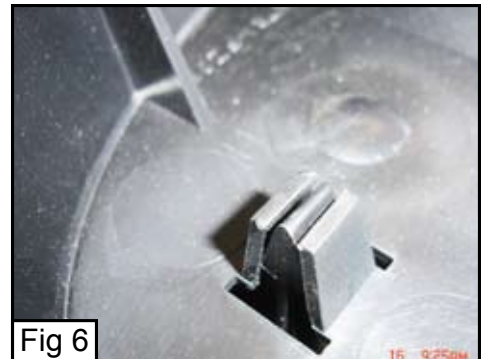
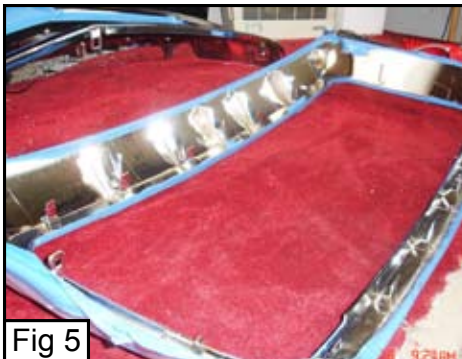
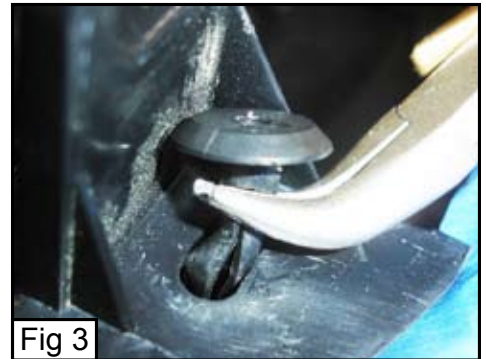
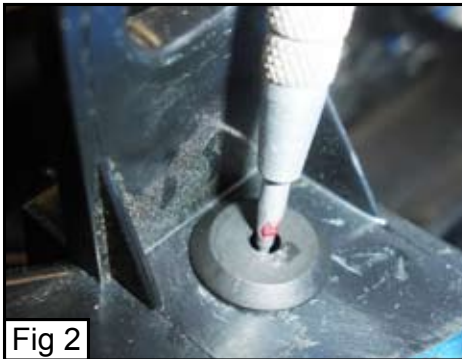
PLEASE READ AND UNDERSTAND ALL INSTRUCTIONS BEFORE INSTALLATION. Auto makers offer varied models to each vehicle and occasionally manufacture more than one body style of the same model. To assure your part is correct; our tech department can be contacted at [tech@trexbillet.com](mailto:tech@trexbillet.com) to verify fitment or assist with tech questions. All other inquires can be directed to [info@trexbillet.com](mailto:info@trexbillet.com). In the event you do not have internet access please call 1-800-287-5900.

### Step 1 Factory Grille Removal

Remove the factory grille from the vehicle. There are 4 bolts along the top of the grille under the hood that need to be removed. The top of the grille will be loose, pull the bottom out until the latches pop loose and remove the grille.

### Step 2 Factory Grille Disassembly

With the grille removed from the vehicle remove the 5 plastic pop clips and one 10/32" bolt from the top plate of the factory grille, remove the top plate (Fig 1). Now remove 7 plastic pop rivets from along the top edge of the factory grille assembly. Use a pointy object or a small punch to press in the center of the top (Fig 2). The pop rivet will break and will not be reused. Remove the pop rivet with a pair of pliers (Fig 3). Now you will remove the 2 chrome trim bars from the front of the factory grille. From the backside of the grille, unlatch the 7 plastic latches holding the chrome trim bars secure with a flat screwdriver (Fig 4). Pull the chrome trim bars off the grille. Now you will separate the front and back sections of the factory grille. On the backside of the factory grille there are 6 plastic latches along the top, 6 along the bottom and 2 on each side, unlatch these with a flat screwdriver and separate the front and back sections of the factory grille (Fig 5). Remove the ford logo, there are 4 plastic latches and 1 nut holding it to the grille (Fig 6). If you want to remount the ford logo on the new grille, cut the black plastic tabs off from the backside of the logo and sand it smooth. Continued on page 2.



# Z315461 11-13 FORD SUPER DUTY



# Z315461 11-13 FORD SUPER DUTY

## Step 2 Factory Grille Disassembly Continued

Now you need to remove the 2 side sections from the black section of the factory grille (Fig 7). There are 9 plastic latches on the backside of each section, use a flat screwdriver to unlatch them and remove the side sections. Now reassemble to black plastic bac section and the front grille section minus the side pieces and apply masking tape to the painted/chrome grille shell outer ring to prevent any scratches during cutting (Fig 8).



Fig 7



Fig 8

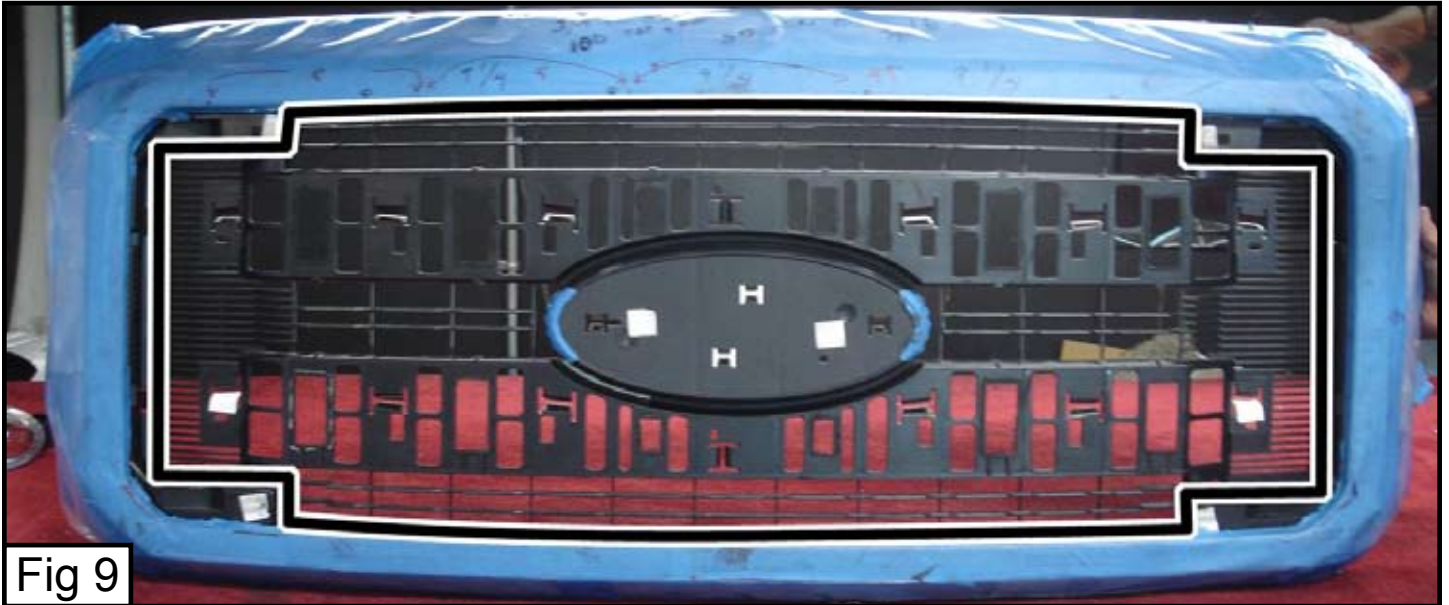


Fig 9

## Step 3 Cutting the Factory Grille

Now you need to cut out the inner section of the black grille section. You will cut around the inner edge of the black section as marked in (Fig 9). The 4 corner areas and the right and left sides will not be cut out, make sure to leave the areas marked in (Fig 10) attached to the black grille section on both the right and left sides. Sand all the cut areas smooth with a sanding wheel. Continued on page 3.



Fig 10

**Step 4 Mesh Grille Installation**

With the factory grille cut and the 2 sections reassembled it is now ready to install the mesh grille. Lay the mesh grille on a work bench and place the factory grille over the mesh grille (Fig 11). Use vise grips to hold the tabs on the mesh grille and the factory grille together making sure the mesh grille is flush with the front edge of the factory grille shell (Fig 12). Install the u-nuts onto the extension brackets with the barbed side of the u-nut on the side of the extension bracket with the bend in it (Fig 13). Mark the factory grille shell at the top side where the center 2 tabs on the mesh grille are located (Fig 14). Insert the extension bracket with the u-nut on it between the black back and front sections of the factory grille (Fig 15). Next take the 3/4" spacers and install them on the other side of the black plastic grille section from the extension brackets, the hole in the spacer will line up with the u-nuts on the extension brackets, insert a 3/4" screw through the hole in the spacer and the hole in the extension bracket and tighten, this will hold the extension brackets secure (Fig 16). Now drill through the holes in the brackets on the mesh grille where it contacts the factory grille shell. Install u-nuts on the lip of the factory shell where you drilled the holes on the bottom 3 tabs only, the holes in the u-nuts will line up with the holes in the factory shell that you drilled (Fig 17). Where you drilled the four holes on the sides of the grille shell, use the 3/4" screws to go through the tabs on the mesh grille and the plastic factory grille, use the flat nuts on the backside to secure the screws (Fig 18 & 19). Reinstall the completed grille shell on the vehicle. Installation complete.

