

T-REX

Billet Grilles

25733

**06-08 HONDA
RIDGELINE**

25733

**06-08 HONDA
RIDGELINE**

BILLET INSERT

Tools Required:

Phillip Screw Driver
Slotted Screw Driver

Hardware / Parts List:

1 Billet Insert (center)
2 Billet Insert (1 right / 1 left)
6 6-32 X 1.5 Machine Screws
6 #8 U-Nuts
6 1" J Hooks

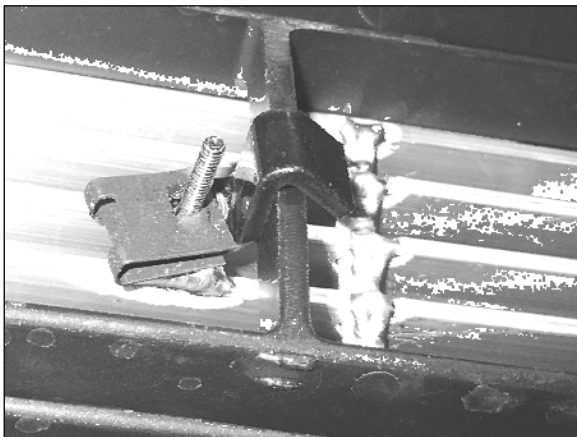
Read and understand instructions before attempting installation

Step 1

Test fit the billets into the bumper openings.

Step 2

Slide the u-nuts over the 'J' hooks. Insert the screws into tabs on the billet. Start to thread the 'J' hooks onto the screws.



Step 3

Install the center bumper insert. Use a screwdriver to position the 'J' hook around the back of the plastic bars in the bumper. Use the Phillips screwdriver to tighten the fasteners. The bumper cover can be loosened from the engine splash shield along the bottom if the 'J' hooks must be held in place. Repeat this process on the outer bumper inserts.

Thank you for purchasing your T-Rex billet grille.

8/10/05