

TOP PLATE
LOGO PLATE

54491
54493

2013 HYUNDAI
SANTA FE SPORT



TOP PLATE
LOGO PLATE

54491
54493

2013 HYUNDAI
SANTA FE SPORT

2013 HYUNDAI SANTA FE SPORT

Main Grille
Install time: 45 Mins.

TOOLS REQUIRED:

Flat Screwdriver
Screwdriver
1/16 Drillbit+Drill
Razor Blade
Socket Wrench

PARTS LIST:

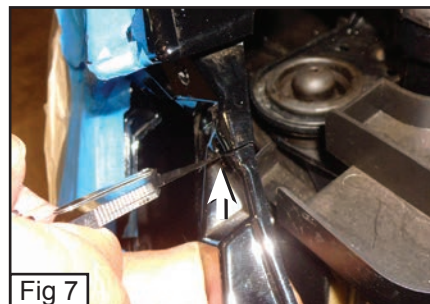
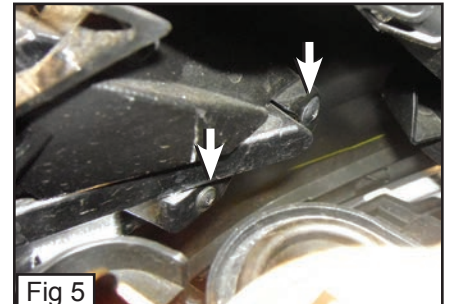
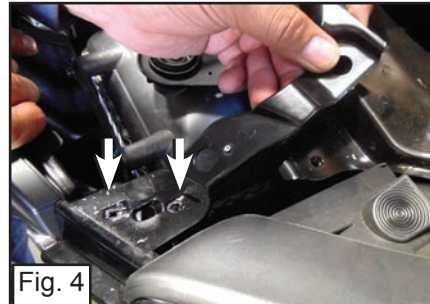
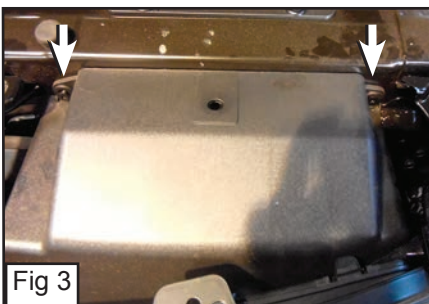
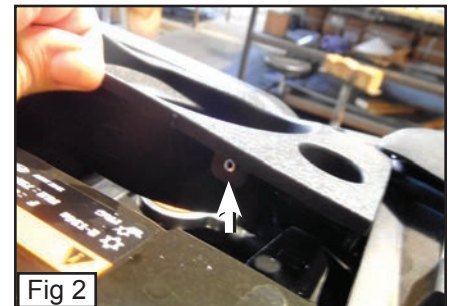
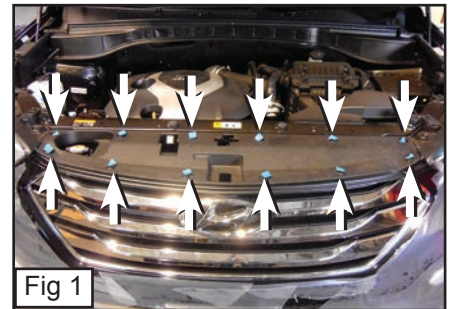
(1) Main Grille	(1) Top Plate
(4) L-Brackets	(1) Logo Plate
(7) 6/32 Washers	(2) 6/32 x 1/2 M-Screws
(11) 6/32 Nylon Lock Nuts	



PLEASE READ AND UNDERSTAND ALL INSTRUCTIONS
BEFORE ATTEMPTING INSTALLATION.

Step 1 Factory Grille Removal

- Remove 12 Clips and Bolts across the top of the Plastic Cover and remove. (Fig. 1)
- With a 1/16 Drillbit, Drill out the Rivets behind the top Corners of the Factory Grille. (Fig. 2)
- Remove the Two Screws that are on the Plastic Box Cover and Remove. (Fig. 3)
- Remove two Rivets that are on the Top Corner of the Factory Grille Shell (Repeat for other side). (Fig. 4)
- Behind the Grille, There will be 4 Screws along the Top of the Factory Grille and 2 Screws along the Bottom of the Grille, Remove these Screws. (Fig. 5)
- There will be Clips along the Bottom of the Grille, Depress these clips and Carefully Remove the Factory Grille. (Fig. 6)
- With a Razor Blade Remove the Long Tab for the Hyundai Logo. (Don't cut too short to the Factory Shell but just enough so that you wont be able to see it when you Install the Mesh Grille.) (Fig. 7+8)



54491
54493



2013 HYUNDAI
SANTA FE SPORT

54491
54493
2013 HYUNDAI
SANTA FE SPORT

2013 HYUNDAI SANTA FE SPORT

Main Grille

Install time: 45 Mins.

- Place the Logo Plate onto the Factory Logo. (Fig. 9)
 - Insert the M-Screws through the holes that are on the Logo Plate to Attach the Factory Logo in Place. (Fig. 10)
 - Place the Logo onto the Mesh Grille. (Fig. 11)
 - From behind the Grille, Insert a Washer and Nylon Lock Nut onto the Threaded Studs that's on the Logo Plate. (Fig. 12)
 - Place the Top Plate on the Mesh Grille and Insert a Washer and Nylon Lock Nut onto each Stud. (Fig. 13)
 - Place the Mesh Grille through the Factory Grille Opening. (Fig. 14)
 - Place L-Brackets on the Studs along the Bottom of the Mesh Grille and Place a Nylon Lock Nut. (Fig. 15)
- Place back the Factory Top Cover and Clips. (The Factory Clips will go through the Top Plate to hold the Grille in Place.)

INSTALLATION COMPLETE

