

51713
54713

**07-12 LINCOLN
NAVIGATOR**



51713
54713

**07-12 LINCOLN
NAVIGATOR**

UPPER CLASS SERIES GRILLE – 2 PC

Recommended Tools:

5/16" Wrench or Nut Driver
Phillips / Slotted Screwdrivers
T30 Torx Bit
Razor Knife
Die Grinder w/ Sanding Disc or File

Jig-Saw or Cutting Disc
Masking Tape
Marker

Parts List / Hardware:

2 Grille Inserts
4 Plastic Retainers
12 6-32 Nylon Lock Nuts
10 1/2 x 1/2 L Brackets
4 Molding Clips (19519)

Read and understand instructions before attempting installation

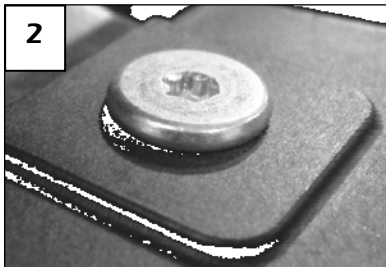
Step 1

It is important to read the instructions and have all the proper tools for installation. This grille is available as an installed assembly. Part number 50713 includes 54713 installed into a factory Lincoln Navigator grille shell. It requires no cutting for installation. Contact your dealer for pricing.



Step 2

To prevent scratching the grille, apply masking tape to the following: Lincoln logo, top two cross bars, center cross bar and lower cross bar of the factory grille. Test fit the four mesh inserts over the factory grille; identify the correct locations. Open the hood. Remove the radiator cover; use a screwdriver to unscrew the fasteners; then pull them out (1). Use a T30 Torx bit to remove the four screws securing the grille support to the body (2).



Step 3

Two plastic fasteners secure a rubber splash shield to the grille support (one on each end of the grille support); use a razor knife to remove the plastic fasteners. Pull the grille forward; reach behind the grille to cut two more plastic fasteners along the bottom of the grille (in each lower corner).



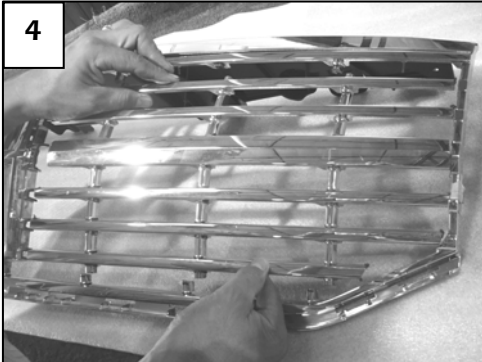
Several bumper cover tabs slide into molded clips along the bottom of the grille. Four metal clips (3) are secured to four of the tabs. Use a slotted screwdriver to remove the clips and separate the molded grille clips from the bumper cover tabs (replacement clips are provided in hardware). Use the palm of your hand to apply pressure to the lower front of the grille while depressing each molded clip. Push the grille back; remove the grille.

54713

54713

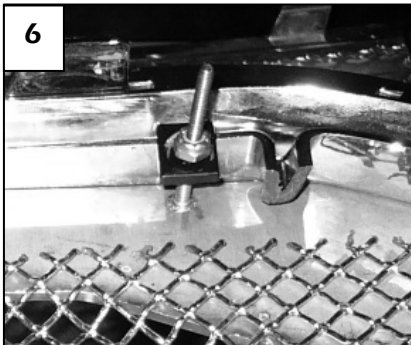
Step 4

The center crossbars that sit behind each mesh insert must be cut from the factory grille. Test fit each grille; use a marker to note which bars will be cut. Make your cuts approximately ½" inside the outer perimeter of each opening (4). The tabs are necessary for the inserts to rest against. Use a file to remove any major burs from each cut (5).



Step 5

Test fit one of the grilles in place. The grille will not sit flush into the opening; the material remaining on each end prevents the insert from fitting properly. The crossbar ends must be filed or sanded down about 1/16. This will allow the inserts to recess into each grille opening. File the crossbar ends smooth; test fit the grille in intervals until the correct fitment is achieved. Repeat the process on the other side. Now center one of the upper inserts in place. Follow the same procedure for fitment of the upper inserts.



Step 6

Now the inserts fit correctly into each opening. Center one of the inserts; from the rear of the grille, use the L brackets to secure the insert (6). Wrap the L brackets around the plastic edges. Thread a nut onto each stud; tighten the hardware. If installing a bumper insert (part number 55712); follow installation instructions of the bumper installation. Re-install the grille assembly and radiator vehicle back onto the vehicle. Use the provided plastic retainers to replace the four fasteners cut to remove the factory grille.

Thank you for purchasing your T-Rex billet grille. 03/12/08