

T-REX

Billet Grilles

54695

03-06 LINCOLN
NAVIGATOR

54695

03-06 LINCOLN
NAVIGATOR

2003-2006 LINCOLN NAVIGATOR **UPPER CLASS SERIES MESH GRILLE**

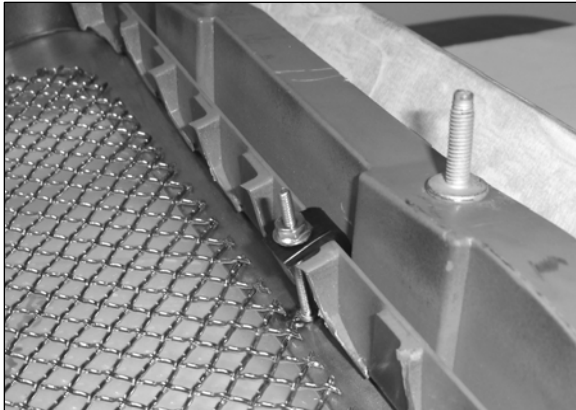
Tools Required:

5/16" Nut Driver / Socket Set
Die Grinder w/ Cut-off Wheel or Jig Saw
Files / Sand Paper
Black Spray Paint

Hardware:

1 Mesh Grille
7 #6 Flat Washers
7 6-32 Nylon Lock Nuts
5 1/2" x 1/2" L Brackets
2 1/2" x 3/4" L Brackets

Read and understand instructions before attempting installation



Step 1

Open the hood and remove the factory grille. Apply masking tape to the chrome or painted areas to prevent scratching.

Step 2

Use a die grinder or jigsaw to cut the center vertical bars from the grille. Make your cut at the base of each bar; leaving minimal material around the opening. Use a die grinder or file to smooth the cuts. Apply a coat of black spray paint around the opening to hide the cuts.



Step 3

Center the grille into the opening. Slide the L brackets on the mounting studs; the longer L brackets install on each end. Secure the brackets with the flat washers and nylon lock nuts.

Thank you for purchasing your T-Rex billet grille. T-Rex Truck Products Inc. 5/5/06