



**2011 TOYOTA TACOMA**  
**X-METAL Grille Kit 3 Pc.**

**TOOLS REQUIRED:**

Phillips Screwdriver  
Flat Head Screwdriver  
Socket & Ratchet Set  
Jigsaw/Grinder  
Vise Grips  
Drill & Bits

**PARTS LIST**

(8) #8x3/4" Screws  
(8) #8 Nut Plates  
(4) 6/32" Nylon Lock Nuts  
(4) 10/32" Washers



PLEASE READ AND UNDERSTAND ALL INSTRUCTIONS BEFORE INSTALLATION. Auto makers offer varied models to each vehicle and occasionally manufacture more than one body style of the same model. To assure your part is correct; our tech department can be contacted at [tech@trexbillet.com](mailto:tech@trexbillet.com) to verify fitment or assist with tech questions. All other inquires can be directed to [info@trexbillet.com](mailto:info@trexbillet.com). In the event you do not have internet access please call 1-800-287-5900.

**Step 1 Factory Grille Removal**

Open the hood and remove the factory grille shell from the vehicle (Fig 1).

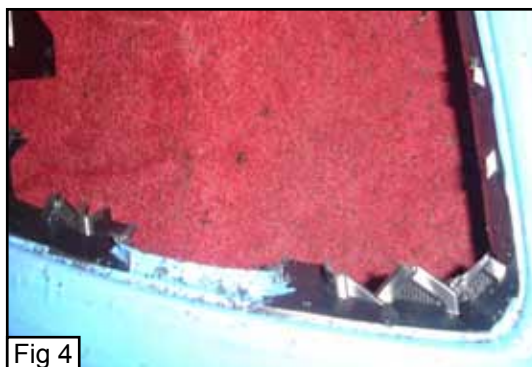


**Step 2 Factory Grille Cutting**

Place the grille shell on a workbench. Using a jigsaw cut the center out of the grille shell, make your cuts leaving a little material (Fig 2 & 3).

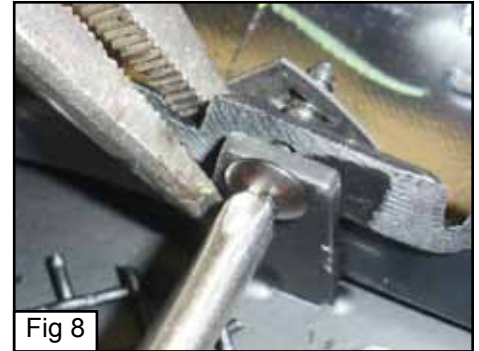


Use a grinding wheel or file to smooth down the areas where you cut out the center section (Fig 4 & 5).



**Step 3 Mesh Grille Installation**

Take the mesh grille and insert it into the cut out opening in the factory grille. Take some vise grips and clamp the mesh grille tabs to the lip on the factory grille shell to hold th mesh grille secure during installation (Fig 6). Now drill a 1/4 hole through the hole in the tab and the plastic lip on the factory grille shell (Fig 7). Take the eight screws and insert them through the holes in the tabs, the heads of the eight screws will be on the inside of the grille opening, and place the nut plates on the end of the screws, tighten (Fig 8).



**Step 4 Side Vent Installation**

Place the grille shell on a workbench. Take one side vent and insert it into the factory grille shell side vent opening and mark where the two threaded studs on the side vent grille contact the factory grille (Fig 9). Drill a small hole (approx 1/4") in the factory grille where you marked the two threaded studs contact (Fig 10). Insert the side vent grille into the factory grille side vent opening, the threaded studs will insert through the holes in the factory grille that you drilled. Install the washers and nylon lock nuts onto the threaded studs and tighten (Fig 11). Repeat this to the other side vent grille. Reinstall the grille onto the vehicle. Installation complete.

