



10-13 TOYOTA TUNDRA

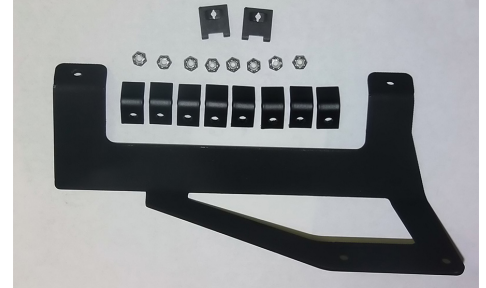
Torch Series Grille For off-road use only

TOOLS REQUIRED:

Flat / Slotted Screwdriver
8mm 10mm Socket and Ratchet
Plastic Pry Bar
Grinding Wheel / Grinder / Jigsaw
Masking Tape

PARTS LIST:

(1) Torch Grille
(8) 6-32 Nylon Lock Nuts
(2) #10 U-Nuts
(8) 1/2" L-Brackets
(1) Latch Mounting Bracket



PLEASE READ AND UNDERSTAND ALL INSTRUCTIONS BEFORE INSTALLATION. Auto makers offer varied models to each vehicle and occasionally manufacture more than one body style of the same model. To assure your part is correct; our tech department can be contacted at tech@trexbillet.com to verify fitment or assist with tech questions. All other inquiries can be directed to info@trexbillet.com. In the event you do not have internet access please call 1-800-287-5900.

Step 1 Factory Grille Removal

Remove the trim along the top of the factory grille shell using a plastic pry bar (Fig 1) being careful not to scratch the grille. With the trim removed, use a phillips screwdriver to remove the five phillips bolts under the trim. Now open the hood and remove the ten 10mm nuts holding the factory grille to the hood and bracket (Fig 2). Remove the two 10mm bolts that hold the hood latch to the bracket at the bottom of the factory grille (Fig 3). Remove the bracket on the backside of the factory grille where the hood latch mounts by removing the phillips screws. Remove the factory grille and place it on a workbench.

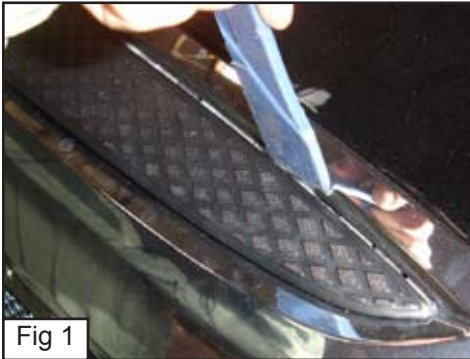


Fig 1



Fig 2

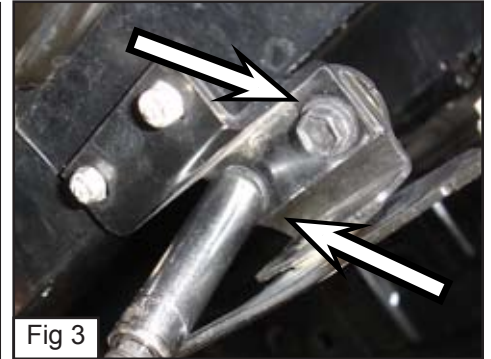


Fig 3

Step 2 Grille Cutting

Cover the front outer edge of the factory grille with masking tape to prevent any scratches. Use a jigsaw to cut the bars from the center of the factory grille by cutting along the top/bottom and sides (Fig 4). Use a sanding wheel to smooth down where the cuts were made (Fig 5). Turn the factory grille over so you are looking at the backside. Now remove the 2nd and 3rd from the left phillips screws from the bottom edge of the factory grille (Fig 6).



Fig 4

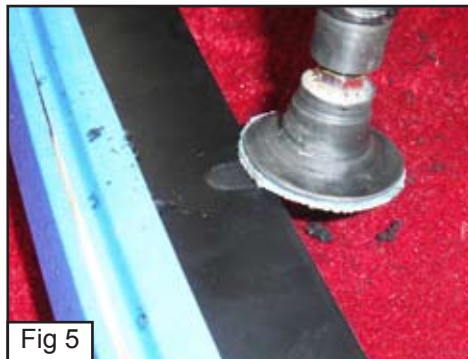


Fig 5



Fig 6

Step 3 Bracket Installation

Now take the latch mounting bracket that came with the mesh grille kit and place it on the factory grille where you removed the two phillips screws, reuse the phillips screws to secure the bracket to the factory grille, the angled edge should be on the left side (Fig 7). Install the u-nuts on the bracket where the two holes are at the top, the barbed side will be toward the front side of the grille (Fig 8). Now take the factory hood latch bracket that you removed in step 1 and install it onto the new latch mount bracket that you just installed. The side with the four holes will fit against the new latch bracket, the end with the two closer holes will be at the bottom (Fig 9). Use the factory phillips screws to secure the brackets together.



Fig 7



Fig 8



Fig 9

Step 4 Grille Installation

Now turn the factory grille facing upward and insert the mesh grille into the factory grille (Fig 10). Holding the factory grille and mesh grille together, turn over the factory grille so you can see the backside. Take the eight 1/2" L-Brackets and install them onto the eight threaded studs and place a 6/32" nylon lock on top and tighten (Fig 11). Now take the factory grille and reinstall it onto the vehicle using the factory hardware. **DO NOT CLOSE THE HOOD UNTIL AFTER YOU REATTACH THE HOOD BRACKET/LINKAGE!** Install the factory hood latch and linkage from under the hood to the hood latch that you installed in step 3 with the factory hardware. Reinstall the grille top trim using the factory hardware. Installation complete.



Fig 10

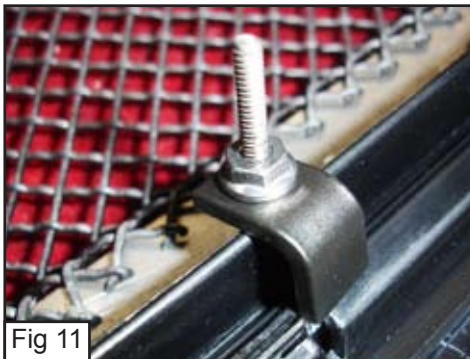


Fig 11