

MAIN GRILLE INSTALLATION


1. Remove the front bumper cover from the vehicle set on protected work surface. Use painters tape to protect the painted surfaces around the grille opening.



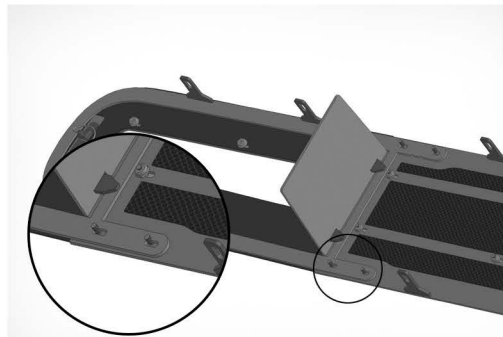
2. Use a pry tool to release the clips that retain the factory grille to the bumper cover.



3. Use a utility knife to remove the plastic welded bead from the right and left headlight bezel in order to remove the grille from the bumper cover.



4. Remove the factory grille leaving the headlight bezels in place as shown.



5. Install the side frames to the main frame using (8) #6-32 nylock nuts and washers. Do not tighten complete.



6. Install the complete assembly to the bumper cover to locate for mounting tabs.



7A. Install the headlight cover to grille. Make sure the headlight cover and grille is flush with the factory bumper cover when the headlight covers are installed.



7B



7C

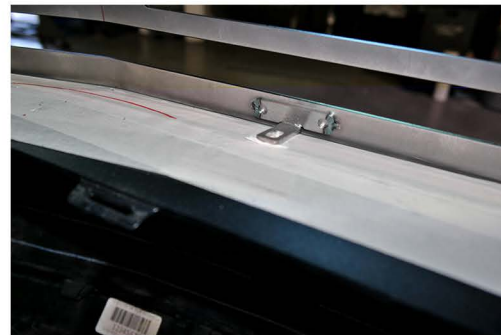
(continued page 2)

MAIN GRILLE INSTALLATION (continued)


8A. Mark the side and main grille mounting tab locations and drill 1/4" hole. Use supplied #10x.625 Allen cap screws, washer and nylock nut to secure. Adjust if required.



8B



8C

9. This completes the installation of the main grille. Check to verify the headlight covers operate correctly and can be removed and replaced.

LOWER GRILLE INSTALLATION


1. Remove the (2) side covers from the lower bumper area.



2. Drill out the plastic rivets to allow the panel to release from the bumper cover.



3. Remove the panels from both sides of the bumper cover.

4. Install the supplied grille overlay on the lower bumper opening. Use supplied hardware to attach grille insert to factory bumper grille.