



## **2011-2014 GMC SIERRA HD**

### **Upper Class Mesh Grille Insert**

**TOOLS REQUIRED:**

Phillips Screwdriver  
Drill & 6/32 Drill bit  
Plastic Prybar

**PARTS LIST**

(4) 4.5 L-Brackets                      (4) 6/32 Nylon Lock Nuts  
(5) Flatnuts                                (1) Mesh Grille  
(5) #8 Screw

**PLEASE READ AND UNDERSTAND ALL INSTRUCTIONS BEFORE ATTEMPTING INSTALLATION.**

**Step 1**

Remove (10) clips from plastic cover. (Fig. 1)  
Remove plastic cover.  
Remove (4) 10mm bolts along the top of grille. (Fig. 2)

**Step 2**

Grille is attached to bumper filler and requires removal to remove grille. Remove 2 10mm bolts from side fender. (Fig. 3)

**Step 3**

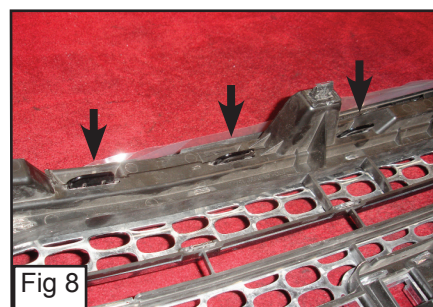
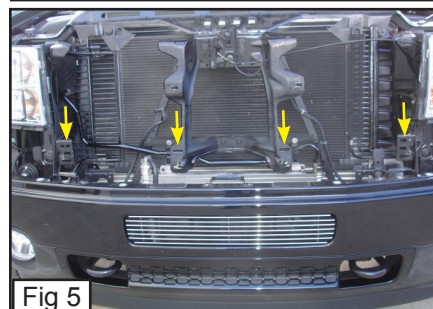
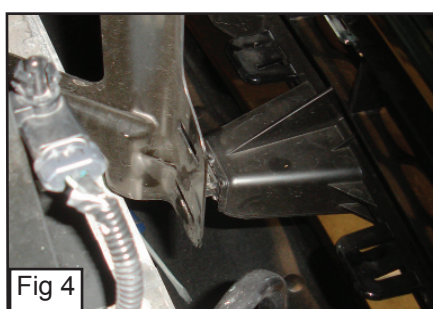
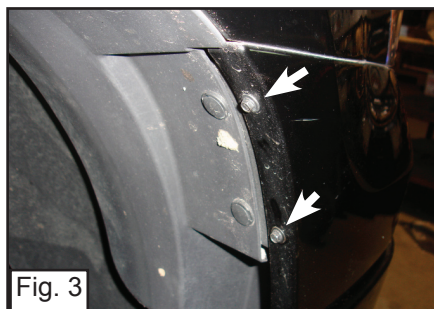
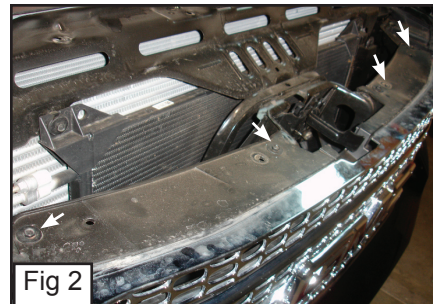
Unclip 4 clips that secure the factory grille. (Fig. 4 & 5)

**Step 4**

On each end, 3 molded clips secure bumper filler, Carefully pull on side bumper to release clips. (Fig. 6)  
Remove factory grille and bumper (grille and bumper are clipped together). (Fig. 7)

**Step 5**

Unclip 4 clips from factory grille to separate the grille shell from the bumper filler. (Fig. 8)





---

## **2011-2014 GMC SIERRA HD**

### **Upper Class Mesh Grille Insert**

#### **Step 6**

Mark along the inner edge on the 3 plastic bars on the factory grille shell. (Fig. 9)  
With a Jigsaw, cut along the verticle and plastic bars that hold the factory grille in place. (Grind and cut excess material).  
*Do not remove the top horizontal mounting section used to secure the grill assembly with the (4) 10 mm bolts. (Fig. 10)*

#### **Step 7**

With the 6/32 Nylon Locks, Install (4) 4.5 L-Brackets along the top of grille. (Fig. 11)

#### **Step 8**

Insert the factory shell on the billet grille. (Fig. 12)  
Drill a 6/32 hole through the hole on the bracket.(Fig. 13 & 14)

#### **Step 9**

Insert a #8 screw where you drilled the hole.(Fig. 15)  
Insert a Flatnut behind to screw in place. (Fig. 16)  
Re-Assemble bumper, plastic cover, nuts and clips.

**Installation Complete.**

