

54110 **07-12 CHEVY** **SILVERADO**



54110 **07-12 CHEVY** **SILVERADO**

2 PC UPPER CLASS SERIES GRILLE

Recommended Tools:

Phillips / Slotted Screwdrivers
10mm Socket & Ratchet
5/16" Wrench or Nut Driver
Die Grinder or Jigsaw (optional)

Parts List / Hardware:

2 Upper Class Inserts (Top and Bottom)
16 6-32 Nylon Lock Nuts
16 #10 Flat Washers
16 90° / 45° Flange Brackets

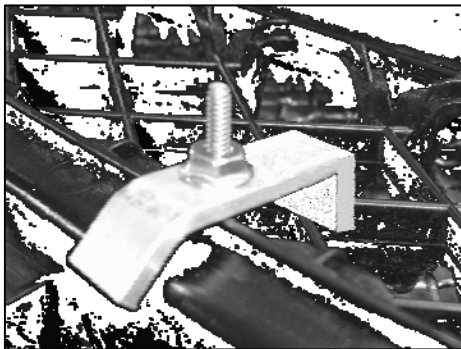
Read and understand instructions before attempting installation

Step 1

Test fit the grilles into the openings. Remove the radiator cover from the vehicle; then the four 10mm bolts along the top of the grille. The grille has four metal clips along the bottom; these secure the grille to the core support. Use a slotted screwdriver to release the clips. Remove the grille. ***If installing as an overlay; skip to Step 3.***

Step 2

Apply masking tape to the face of the grilles to prevent scratching. Use a die grinder or jigsaw to cut the inner mesh from the grille openings. Make your cuts at the base of the mesh; leave a 3/16" border around the openings for the grilles to rest.



Step 3

Center the top grille into the opening of the grille shell. Install the flange brackets onto the mounting studs. Thread a Nylon lock nut onto each stud. Tighten the nuts until the grille is held in place (**DO NOT TO OVERTIGHTEN**). Use the remaining 'flange brackets, nuts and washers to secure the lower grille in place.

Step 4

Re-install the grille assembly and radiator cover back onto the vehicle.
Thank you for purchasing your T-Rex billet grille. 6/29/06

