

20051 **07-12 CHEVY** **TAHOE**



20051 **07-12 CHEVY** **TAHOE**

2 Pc. Billet Grille **2007-12 TAHOE, SUBURBAN, AVALANCHE**

Recommended Tools:

Philips Screwdriver
7MM, 10MM, 12MM Wrench or Nut Driver
5/16" Socket / Wrench
Drill & 1/8" Drill Bit

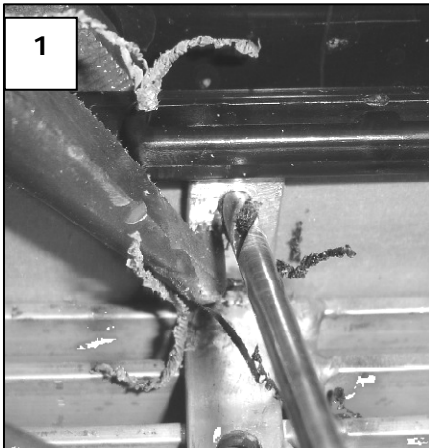
Parts List / Hardware:

2 Billet Inserts (Top and Bottom)
8 #8 x 3/4" Screws
8 #8 Flat Nuts

Read and understand instructions before attempting installation

Step 1

Open the hood and remove the grille. Remove (6) plastic clips to remove upper shroud. Remove (4) 10 mm screws and (2) 12 mm screws to allow access to the back of the stock grill. Remove the factory grille inserts by unclipping the clips on the inner grille perimeter.

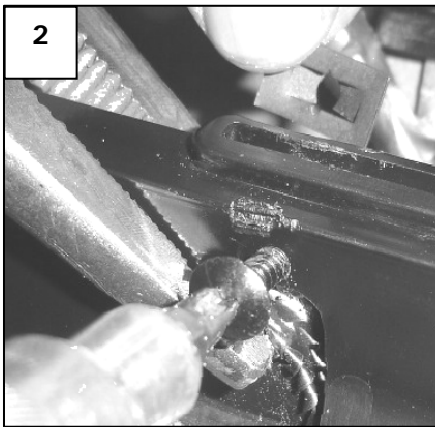


Step 2

With the grille removed; unclip the chrome factory grille centers from the outer black frame.

Step 3

Insert the lower grille insert. Making sure that the billet is sitting flush to the grille shell; secure the billet to the plastic shell using vise grips. Using the drill and drill bit; drill a pilot hole using the hole in the bracket as a guide (1). Using the provided screws and flat nuts secure each tab using these in each hole drilled (2). Repeat this on the top grille.



Step 4

Re-install the grille to the vehicle and install the radiator cover.

Thank you for purchasing your T-Rex billet grille. 4/09/08