

6712091

2011-2014 GMC
SIERRA HD



6712091

2011-2014 GMC
SIERRA HD

2011 - 2014 GMC SIERRA HD

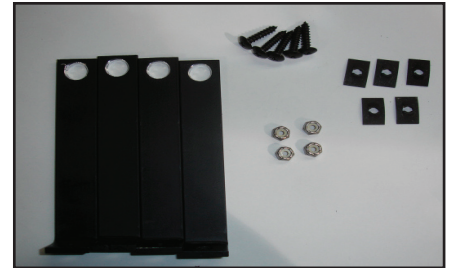
X-METAL Series - Studded Main Grille

TOOLS REQUIRED:

Phillips Screwdriver
Drill & 6/32 Drill bit
Plastic Prybar

PARTS LIST

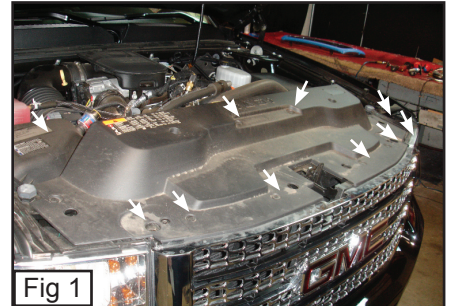
(4) 4.5 L-Brackets (4) 6/32 Nylon Lock Nuts
(5) Flatnuts (1) Mesh Grille
(5) #8 Screw



PLEASE READ AND UNDERSTAND ALL INSTRUCTIONS BEFORE ATTEMPTING INSTALLATION.

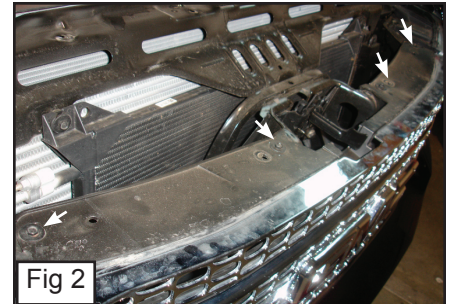
Step 1

Remove (10) clips from plastic cover. (Fig, 1)
Remove plastic cover.
Remove (4) 10mm bolts along the top of grille. (Fig, 2)



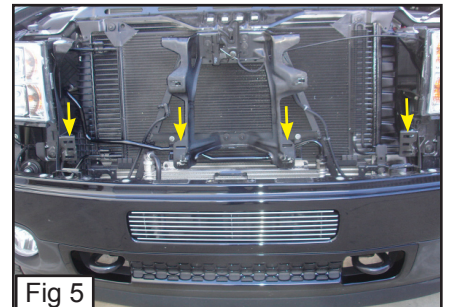
Step 2

Remove 2 10mm bolts from side fender. (Fig, 3)



Step 3

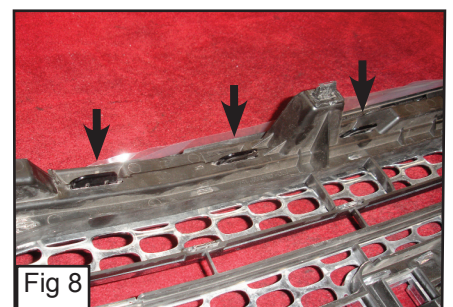
Unclip all clips that secure the factory grille. (Fig. 4 & 5)



Step 4

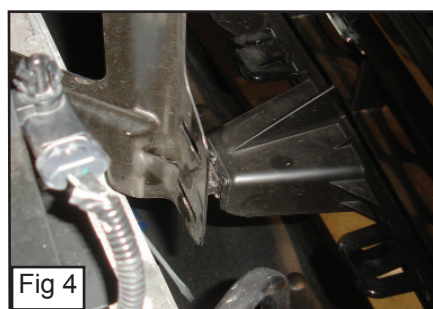
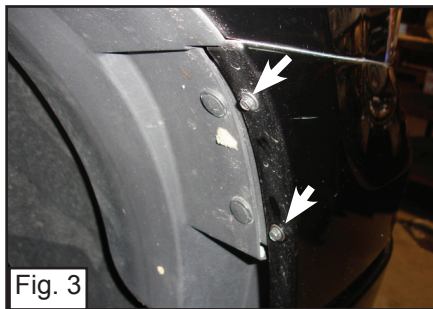
On each end, 3 molded clips secure bumper filler, Carefully pull on side bumper to release clips. (Fig. 6)

Remove factory grille and bumper (grille and bumper are clipped together). (Fig. 7)



Step 5

Unclip all clips from factory grille to separate the grille shell from the bumper filler. (Fig. 8)



6712091

2011-2014 GMC
SIERRA HD



6712091

2011-2014 GMC
SIERRA HD

2011 - 2014 GMC SIERRA HD

X-METAL Series - Studded Main Grille

Step 6

Mark along the inner edge on the 3 plastic bars on the factory grille shell. (Fig. 9)

With a Jigsaw, cut along the verticle and plastic bars that hold the factory grille in place. (Grind and cut excess material).

Do not remove the top horizontal mounting section used to secure the grill assembly with the (4) 10 mm bolts. (Fig. 10)

Step 7

With the 6/32 Nylon Locks, Install (4) 4.5 L-Brackets above the grille. (Fig. 11)

Step 8

Insert the factory shell on the billet grille. (Fig. 12)

Drill a 6/32 hole through the hole on the bracket.(Fig. 13 & 14)

Step 9

Insert a #8 screw where you drilled the hole.(Fig. 15)

Insert a Flatnut behind to screw in place. (Fig. 16)

Re-Assemble bumper, plastic cover, nuts and clips.

Installation Complete.

